

Edited by:



**POLITECNICO
MILANO 1863**

DEPARTMENT
OF ARCHITECTURE
AND URBAN STUDIES

craft

competence center
anti-fragile territories

Managed by:



Poliedra
POLITECNICO DI MILANO



HOW TO ACTIVATE
TEMPORARY REUSE
PROJECTS IN ABANDONED
SPACES?

HOW TO ACCOMPANY
LONG AND UNCERTAIN
REGENERATION PROCESSES
OF LARGE URBAN AREAS OVER
TIME THROUGH TEMPORARY
AND INCLUSIVE USES?

5

HOW TO TEMPORARILY
ACTIVATE NEW IMAGINARIES
AND TEST USE PATTERNS
IN PUBLIC SPACE, OR
BUILD LANDSCAPES WITH
COMMUNITIES THROUGH
TEMPORARY USES?

HOW TO DESIGN HIGH-QUALITY
TEMPORARY ARCHITECTURES
IN POST-DISASTER IN-
BETWEEN SITUATIONS, AND
HOW TO DESIGN TEMPORARY
EVENTS AND EVALUATE THEIR
EFFECTS AND LEGACY?

INDEX



people

DIRECTORS, SCIENTIFIC COMMITTEE AND FACULTY

7

the master

PROJECT DESCRIPTION and EDUCATIONAL GOAL

potential jobs

NEW JOB OPPORTUNITIES

how we work

EDUCATIONAL METHOD

the network

PARTNERS, SPONSORS AND THEIR ROLES

contents

THEMES AND MODULES

1a. Temporary Reuse of Abandoned and Underused Spaces

1b. Temporary Uses in Shrinking Territories

2a. Major Urban Transformation and Temporary Uses

**2b. Temporary Uses, Architectures and Districts
for Mid and Large Scale Events**

**3a. Temporary Uses in Public Space: Public Art, Community
Activation, Small Events**

**3b. Landscape and Temporary Uses: Landscape Urbanism, Land Art
and Walkscapes**

4a. Temporary Uses and Architectures in Natural Disaster Recovery

**4b. Temporary Uses and Architectures in Post-War and
Humanitarian Reconstruction**

more to know

REGISTRATION, TIMES, LOCATIONS, CONTACTS

people

DIRECTORS, SCIENTIFIC COMMITTEE AND FACULTY

8

DIRECTORS

Antonella Bruzzese, DASTU Politecnico di Milano, director
Isabella Inti, DASTU Politecnico di Milano, temporiuso, co-director

SCIENTIFIC COMMITTEE

Ricky Burdett, dir. LSE-cities London School of Economics and Political Science (UK)
Stefan Tischer, DADU Università degli Studi di Sassari; Landworks; Harvard University (USA)
Rozafa Basha, University of Prishtina "Hasan Prishtina"(RKS)
Massimo Bricocoli, DASTU Politecnico di Milano
Valeria Fedeli, dir. CRAFT - Centro Competenze Territori AntiFragili -- DASTU Politecnico di Milano
Andrea Gritti, DASTU Politecnico di Milano
Antonio Longo, DASTU Politecnico di Milano
Davide Ponzini, DASTU Politecnico di Milano

OTHER EXPERTS AND LECTURERS INVITED

Alejandro Aravena, Elemental (RCH), DASTU Politecnico di Milano - TBC
Stefano Boeri, DASTU Politecnico di Milano, president Triennale di Milano
Martijn Braamhaar, head of Bureau Broedplaatsen Amsterdam (NL)-TBC
Giulia Cantaluppi, Temporiuso office
Sara Caramaschi, DASTU Politecnico di Milano
Francesco Careri, Università Roma Tre, Stalker/ON
Maddalena De Ferrari, Università di Genova
Joseph Grima, Alcova and Space Caviar
Jan Jongert, Superuse Studios, TU Delft (NL)
Zachary Jones, DASTU Politecnico di Milano
Camillo Magni, DASTU Politecnico di Milano, ASF Architetti Senza Frontiere
Simon Laisney, Plateau Urbain (F)
Andrea Maspero and Paola Serritu, Landworks
Rahul Mehrotra, Harvard University, RMA architects (USA)
Ezio Micelli, dir. Master U-RISE IUAV Venezia
Andrea Minetto, cultural manager and advisor
Philipp Oswalt, University of Kassel (D)- TBC
Matteo Persichino, Temporiuso association
Ippolito Pestellini, 2050+ agency
Paolo Piacentini, founder Federtrek
Alessandro Petti and Sandi Hilal, DAAR, Royal Institute of Art Stockholm, Lund University (SE)
Roberto Pinto, Università di Bologna and art curator
Chiara Quinzii and Diego Terna, QTA Quinzii Terna architecture
Filippo Romano, photographer, Master IUAV in photography, Venezia
Demetrio Scopelliti, AMAT Comune di Milano
Luca Tamini, DASTU Politecnico di Milano
Ilaria Tonti, DAD Politecnico di Torino
Marco Tortoioli Ricci, ABA_ Accademia Belle Arti and ISIA Urbino
Luca Velo, IUAV Venezia
Alexander Römer and Peter Zuiderwijk, Constructlab Transnational Network

MANAGEMENT

Consorzio Poliedra – Politecnico di Milano



PROJECT DESCRIPTION AND EDUCATIONAL GOAL

M-US-T Master in Temporary Uses is an advanced postgraduate programme on temporary uses offered at the Politecnico di Milano. Within a wide range of approaches, it addresses the planning, design, implementation, and management of temporary and transitional uses as **valuable tools to support processes, projects and strategies for urban and territorial transformations at different scales.**

The Master aims to respond to the growing demand for tools and skills related to temporary and transitional uses as well as tactical urbanism, from a broad array of urban actors- including public administrations, real estate developers, citizens' associations, activists, placemakers, and professionals engaged in territorial animation.

Adaptability, flexibility, transformations by phases, transitional or temporary uses belong to different disciplinary traditions - such as "open" planning, landscape urbanism, or tactical urbanism - and are also rooted in widespread practices and forms of intervention in situations such as post-disaster housing emergencies or the major infrastructural and architectural projects for large and medium-scale events.

An increasing variety of urban actors address complex, urgent, and often change-resistant urban problems through temporary interventions pursuing different goals: reusing abandoned spaces, responding to post-emergencies, testing new functions and experimenting with alternatives, or accompanying long-term processes.

To act effectively, consciously, and appropriately in these contexts, **diverse and multidisciplinary skills are required:** competencies in territorial, community and stakeholder analysis, abilities to define intervention strategies and tactics, or capacities to design site-specific and adaptable projects for unforeseen uses. M-US-T Master's in Temporary Uses, trains professionals with these skills, preparing new experts capable of shaping and managing temporary urban practices.

potential jobs

NEW JOB OPPORTUNITIES

10

M-US-T aims to spread and consolidate the culture of temporary uses among **professionals, recent graduates, managers, and municipal technicians** from different planning and land management disciplines. It offers high-level technical specialization to design and implement transitional and temporary uses in ways most appropriate to specific contexts, in reference to the thematic modules addressed by the Master.

Through the acquisition of the skills provided by the Master's course, manifold professional profiles will be outlined or redefined, such as: **reuse agents, experts, designers, activators, event planners and managers of temporary uses** in the different cases delineated (reuse of abandoned buildings and residual spaces, large urban projects, landscape, public space, post-disaster situations, big events).

These professional profiles may find employment within: **public administrations at different levels, third sector, NGOs and agencies, companies, and real estate firms; or in organizations involved in community activation and engagement**; as consultants for public and private entities; or within contexts of socio-cultural entrepreneurship or placemaking. The Master will also explore the theme of drafting calls for tenders as a tool to foster self-promotion and **new entrepreneurship**, and will create several opportunities for participants to meet numerous actors active in the field. To promote suitable job opportunities, Master's participants will also undertake **traineeships** within organizations, institutions, bodies, and companies engaged in regeneration projects, policies, and programs engaged in temporary uses.



EDUCATIONAL METHOD

The Master is organized into four parts, subdivided into eight modules, each addressing the design of temporary uses in relation to: the **reuse of abandoned buildings and residual spaces; shrinking territories; large urban projects; the regeneration of landscapes and public spaces; post-disaster situations and urban transformations resulting from big events.**

11

The main training objectives of the Master's course are: to **learn** about the different approaches to temporary uses; to critically **evaluate** situations and contexts in which it is valuable and appropriate to implement temporary uses; and to acquire the basic skills required to **initiate** temporary use projects. These goals will be pursued through a range of activities including lectures and discussions, exercises and individual study. Particular emphasis will be placed on **visits** and **meetings with professionals**, organizations, and territorial entities engaged in experimenting with temporary uses; as well as on the **workshop** and the **internship**, which will offer opportunities for design and implementation experience or in-depth study within institutions, professional practices, private companies, associations and NGOs in the forms to be defined.

The master includes a maximum of **25 students per level** and comprises **1500 hours** of lectures and activities corresponding to **60 CFU/ECTS credits**, over a **16-month period**.

Activities include:

- **online introduction to the topic** (June 2026)
- **lectures and discussions, exercises, visits and meetings** with territorial entities and realities and professionals working with temporary uses (2 and 1/2 days per week, September 2026 - January 2027)
- a **realization workshop** (June 2027)
- an **internship** (between February and August 2027)
- a **final paper** with public presentation and discussion (September 2027)

the network

PARTNERS, SPONSORS AND THEIR ROLES

12

The Master's program will allow **the meeting and the discussion with institutions, companies, and professionals.**

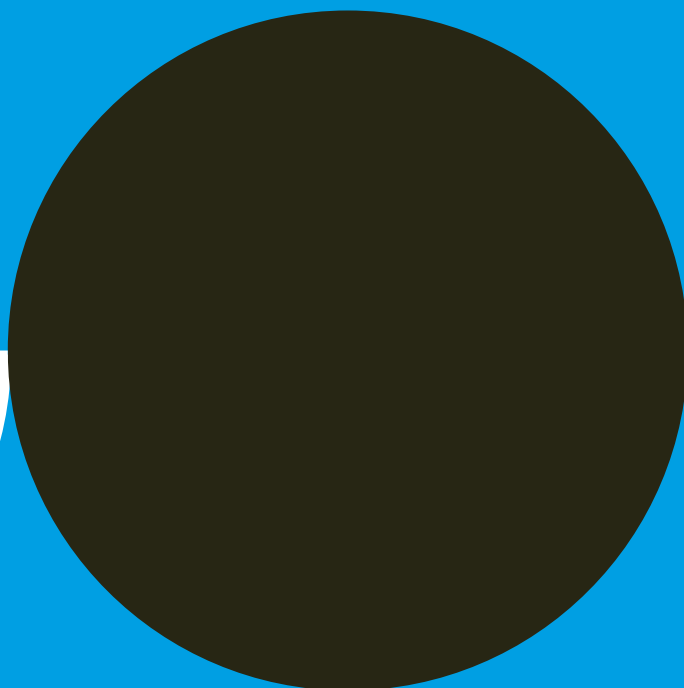
M-US-T's partners or sponsors will play different roles, aimed at:

- establishing **a network of expert referents** on the topic (other universities, research centers, foundations);
- acting as **interlocutors in projects, processes, and policies** dealing with temporary and transitional uses (entities and institutions interested in the topic and sponsoring the Master's program);
- proposing ongoing **cases and projects to observe** and/or offering themselves as case studies on which to build dialogue (local authorities, developers);
- supporting the Master through **internships** (local authorities, developers, professional firms);
- supporting the Master through **sponsorships and scholarships** for internal staff and/or deserving participants (local authorities, developers, professional firms).

Notes

Students from the first edition of M-US-T completed their internships at companies, professional firms and third sector organizations such as: ARUP, REDO sgr, Fondazione Housing Sociale, Landworks, QTA- Quinzii Terna architects, Piovenefabi architecture studio, Temporiuso office.

THEMES AND MODULES



M-US-T IS DIVIDED IN 4 PARTS AND DEVELOPED INTO 8 MODULES AND 1 WORKSHOP

14

M-US-T is divided into four parts and developed into eight modules and a workshop. Each module addresses the design, planning, implementation, and management of temporary uses

Part 1

- 1a. Temporary Reuse of Abandoned and Underused Spaces
- 1b. Temporary Uses in Shrinking Territories

Part 2

- 2.a Major Urban Transformation and Temporary Uses
- 2.b Temporary Uses, Architectures and Districts for Mid and Large Scale Events

Part 3

- 3a. Temporary Uses in Public Space: Public Art, Community Activation, Small Events
- 3b. Landscape and Temporary Uses: Landscape Urbanism, Land Art and Walkscapes

Part 4

- 4a. Temporary Uses and Architectures in Natural Disaster Recovery
- 4b. Temporary Uses and Architectures in Post-War and Humanitarian Reconstruction

The master's program will employ a variety of **teaching** methods: **lectures and discussions, exercises and individual study; visits and meetings** with professionals, organizations, and territorial entities engaged in experimenting with temporary uses; a **realization workshop** will allow a design and implementation experience.

Several **international guests will offer keynote lectures** and be available for dialogue with students. Participation in classroom discussions and debates will form an integral part of the course. After each module, students will be required to submit a short paper, which will be evaluated together with the final thesis. The final thesis may consist either of a critical evaluation of a case study or a project proposal, depending on the students' profiles and interests. **Internships** with organizations, professional studios, private companies, agencies, and firms dealing with temporary uses will complete the educational offerings.



INTRODUCTION TO TEMPORARY USES: HISTORY AND PERSPECTIVES

A series of online lectures will introduce the key theoretical foundations of **Ephemeral Urbanism, Open Planning, Adaptive Reuse, Landscape Urbanism, Public Art, and Landscape Art**, leading up to projects on **Transitional and Incremental Architecture**.

Introduction 15
18-26 June 2026

The introductory lessons will define the relationships and differences between **temporary uses, transitorial uses, and tactical urbanism**, addressing the key questions: What are temporary uses? and Why initiate temporary projects during the “interim period” between a former use and the future reuse of an abandoned building or area?

It will further explore elements of **civil and solidarity economics, collaborative welfare**, and the role of the **third sector** and **interest groups** in promoting temporary use initiatives.

Finally, the introductory period will illustrate **national and international case studies** and practices of temporary uses, following a **timeline from the mid-1990s to the present day**, tracing the evolution of concepts and approaches over time.

Part 1, module 1a

TEMPORARY REUSE OF ABANDONED AND UNDERUSED SPACES

16

What is temporary reuse?
When did this practice originate?
How to activate temporary reuse
projects?
What rules and models should be
followed?

Part 1
module 1a
10-26 September
2026

Module 1a, through lectures and case studies of successful international and Italian projects, will illustrate the practices of temporary reuse that are becoming increasingly established, while also addressing emerging challenges and critical issues. It will present the **Manifesto for Temporary Reuse** and a **temporary reuse diagram** highlighting the intersections between the **types of abandoned and underutilized spaces (supply)**, the **short and long-term timeframes of reuse cycles**, and the **populations using these spaces (demand)**.

The Module 1a will cover: **Temporary reuse practices and tools**, including international and Italian case studies, visits and meetings with stakeholders; **Mapping abandoned and underutilized spaces** and defining a taxonomy of abandonment to learn different types of a potential supply; **Mapping populations, stakeholders and groups of interest** that could subsequently make use of these spaces; **Re-cycles of life** linking reuse timeframes to site-specific needs; **Levels of temporary infrastructure and architecture** enabling the re-inhabitation of long-abandoned or unfinished places; **Start-up and project quality indicators** (e.g. business plan, set-up, common rules) for access and sharing of spaces; **Public policies for temporary reuse** aimed at consolidating, scaling up, and renewing these practices.

Meeting national experts and leading international figures in the classroom as well as visits to exemplary temporary reuse projects in Italy will also be organized.



Part 1, module 1a_Faculty

TEMPORARY REUSE OF ABANDONED AND UNDERUSED SPACES



Antonella Bruzzese
DASTU Politecnico di Milano, Director



Isabella Inti
DASTU Politecnico di Milano, temporiuso, Co-Director



Martijn Braamhaar
head of Bureau Broedplaatsen Amsterdam (NL) - TBC



Jan Jongert
Superuse Studios, TU Delft (NL)



Simon Laisney
Plateau Urbain (F)



Matteo Persichino
Temporiuso association



Alexander Römer and Peter Zuiderwijk
Constructlab Transnational Network

Part 1 17
module 1a
10-26 September
2026

parte I

MANUALE PER IL RIUSO TEMPORANEO

Ritrovare uno spazio in abbandono in 7 mesi

Che cos'è il riuso temporaneo? Quando nasce questa pratica? Come attivare progetti di riuso temporaneo? Quali regole e modelli seguire?

Questo manuale è nato da un'idea semplice, quella di fornire un libro che presenti i temi più importanti legati al riuso temporaneo di spazi in abbandono, affinché utilizzatori di diverse discipline se ne possano appropriare per affrontare nuovi progetti. "Embroidure" la parola greca per "manuale" significa un oggetto da usare a portata di mano e con questo auspicio abbiamo costruito un percorso che si articola in 7 mesi.

La risposta è la conoscenza degli spazi vuoti per conoscerne le diverse tipologie di uso potenziale offerta, le aspettative delle popolazioni che potrebbero poi fruirne degli spazi i nuovi cicli di vita che rimarranno con tempi di vita legati a significati specifici. I livelli di architettura e infrastrutture primarie per poter ottenere dei luoghi per lungo tempo abbandonati o rimasti incompiuti, le regole per l'accesso e la condivisione degli spazi, fino alle possibili politiche pubbliche per consolidare e strutturare queste pratiche.

photo credits: Temporiuso

OFFERTA parti di città dismesse



ex scali ferroviari


spazi aperti residuali
infrastrutture


quartieri storici



aree industriali dismesse



aree militari dismesse

OFFERTA spazi urbani dismessi



(f) ex fabbrica



(m) ex caserma



(fs) ex scalo ferroviario



(p) ex edificio pubblico



(u) ex ufficio



(i) cantiere incompiuto


(n) ex negozio
spazio piano terra


(c) ex cascina


(v) spazio residuale
verde incolto

(ca) campo agricolo

TEMPI cicli di riuso temporaneo

1 giorno/ 10 giorni
(evento, turismo)

9 mesi
(lavoro, studio)

18 mesi
(lavoro, associazionismo)

3 anni + rinnovo
(associazionismo, start-up
impresa)

5 anni + rinnovo
(artigianato, fab-lab,
start-up impresa)

REGOLE d'uso temporaneo

Comodato d'uso
temporaneo
per associazioni

Comodato d'uso
temporaneo
per laboratori
e piccole imprese

Comodato d'uso
temporaneo
per abitazioni
(studentato,
residenza artistica)

Concessione in uso
temporaneo per
installazioni e
performance
(piazze pubblici,
land-art, ostello
designers)

LIVELLI di infrastrutture e architetture temporanee


LIVELLO 2
strutture aggiuntive,
arredi interni ed
esterni, immagine
coordinata, infrastrutture
primarie (acqua, luce,
riscaldamento)

LIVELLO 1
arredi interni ed
esterni, immagine
coordinata, infrastrutture
primarie (acqua, luce,
riscaldamento)

LIVELLO 0
immagine coordinata,
arredamenti e
infrastrutture
temporanee (generatore
elettrico, WC, climat.)

PROCESSI di trasformazione urbana

MONUMENTALIZZAZIONE

FONDAZIONE

METAMORFOSI

COESISTENZA

EMERGENZA

DOMANDA popolazioni temporanee/ USUFRUTTUARI



studenti


associazioni
no profit


artisti


artigiani
makers

cooperative
start-up

turisti low cost

ATTORI riuso temporaneo/ FIGURE PROFESSIONALI

PROPRIETARIO

AGENTE DEL
RIUSO

TECNICO
COMUNALE DEL
RIUSO

EVENT
PLANNER

MAP
COMMUNICATION

RICERCATORE-
ATTIVISTA

ARCHITETTO
DIY

GESTORE

COMUNITÀ DI
CURA

SOCIAL MEDIA
MANAGER

POLITICHE di riuso temporaneo

Tavola rotonda
annuale tra
proprietà,
istituzioni
pubbliche e
associazioni

Concorsi nazionali
e internazionali di
idee per riuso
temporaneo

Bandi /Inviti alla
creatività per
assegnazione spazi

Sportello pubblico
riuso temporaneo
per assegnazione
spazi

Agenzia Riuso
temporaneo per
assegnazione spazi



MADE IN MAGE

Artedi
 Atelassè
 ArteinTasca
 BigMagma
 Effemeridi
 FabbriCantiDiGioie
 GarbageLab
 Ghostzip
 lascia la scia
 RiCreazioni
 Rumore
 Semi di Sesamo
 Vectorealism
 Zhumbian
 2be2share

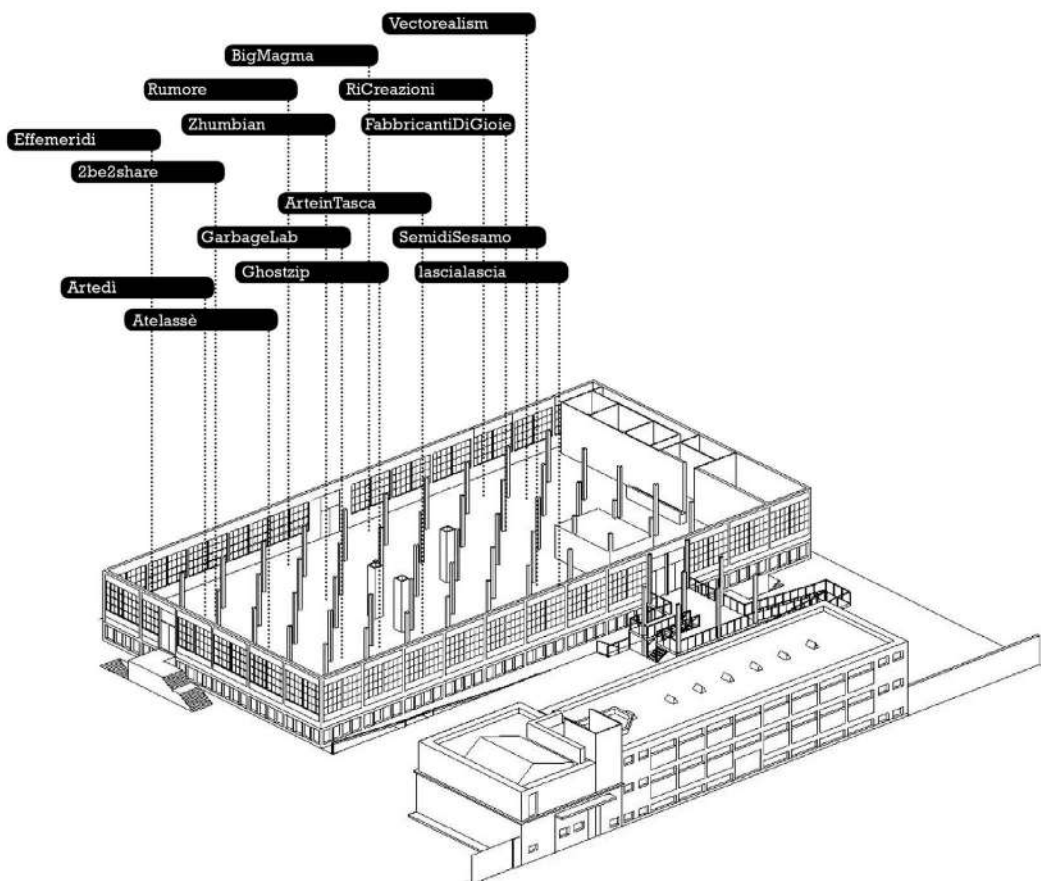






photo courtesy above: Superuse Studios;

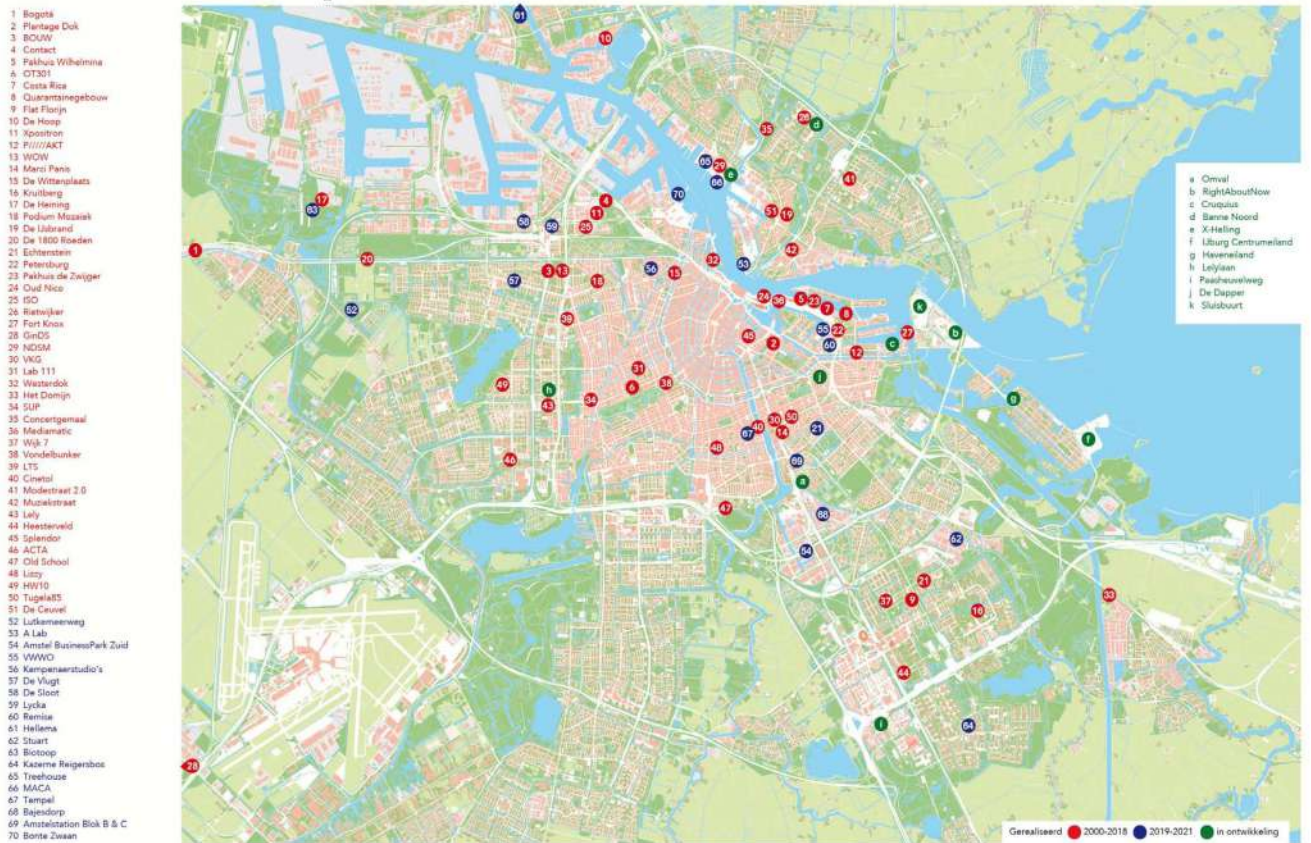
photo courtesy below: Bureau Broedplaatsen Amsterdam

www.amsterdam.nl/broedplaatsen



Broedplaatsen van Amsterdam

2000-2021



TEMPORARY USES IN SHRINKING TERRITORIES

22

**What are shrinking territories?
Why do we talk about ghost towns
and inner areas?
Where are the phenomena of
depopulation, population ageing
(the Greying of Europe), and
migration from inner areas to major
city centres occurring?
How temporary uses can contribute
to visions, policies and projects
aimed to repopulate and bring new
economies to small and medium-
sized towns and shrunk inner
areas?**

Part 1
module 1b
1-3 October 2026

The Italian ghost towns are part of a broader western phenomenon known as *shrinking cities*. A significant number of cities and regions currently face population decline, economic contraction, or both. The "greying of Europe", with nearly a third of the population expected to be aged 65 or over by 2060, is increasing pressure on social services, urban infrastructure, and the labour supply. This trend is raising new challenges for planning and architectural design. The module will analyse the phenomenon through case studies and expert input.

In shrinking cities and territories, there is a need to respond simultaneously to current conditions of vacancy and loss while anticipating prospects for stabilisation and future growth.



TEMPORARY USES IN SHRINKING TERRITORIES

Such territories and regions are increasingly characterised by disinvestment – by a capitalism without capital. And even policies at the national level are not effective enough. However, in many of these contexts, the traditional economic elites of major companies and banks are often being replaced by local, often collectively organised micro-enterprises (P. Oswalt & T. Rietenis, 2012). Through small-scale projects, they use specific local conditions and strong social networks, realising long-term initiatives with limited capital on the principle of a “weak urbanism”.

Temporary projects and transitory uses can help cities harness the opportunities arising from ongoing cycles of growth and decline. Rather than committing to a rigid and formal course of action, the widespread adoption of temporary use initiatives can point the way towards a new form of urbanism – one that is flexible, community-responsive, and sustainable.

Part 1
module 1b
1-3 October 2026

23



Antonella Bruzzese
DASTU Politecnico di Milano, Director



Isabella Inti
DASTU Politecnico di Milano, temporiuso, Co-Director



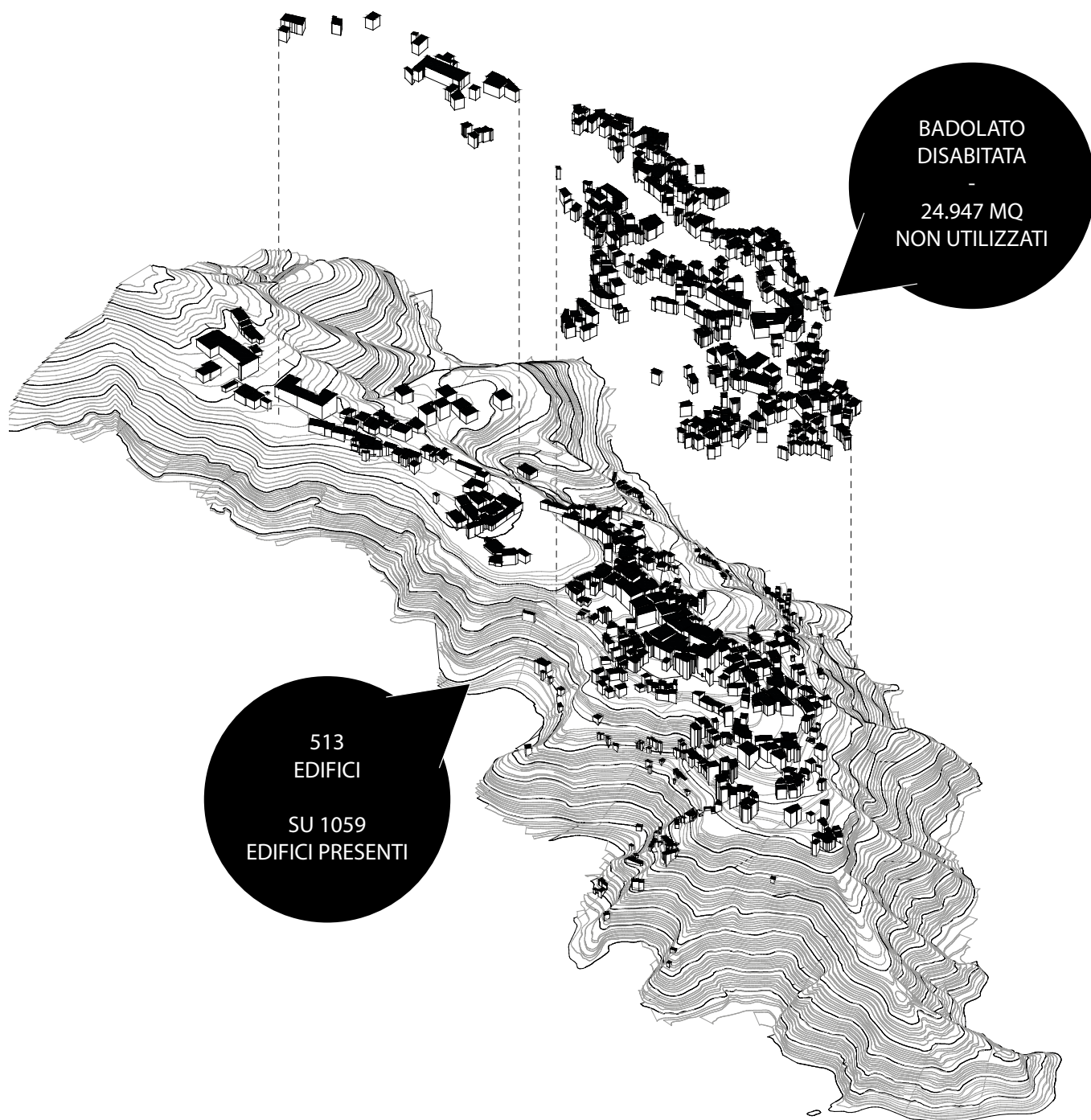
Philipp Oswalt
University of Kassel (D)-TBC



Luca Tamini
DASTU Politecnico di Milano

Due Badolato distinte

24





I paesi doppi della Costa Jonica

Caratteristiche morfologiche - Distanza tra i centri - Storia
Spopolamento - Grado di abbandono



1 Rocca Imperiale

2 Montegiordano

3 Amendolara

4 Villaplana



5 Cassano allo Jonio

6 Corigliano Calabro

7 Mandatoriccio

8 Rocca Imperiale

Il fenomeno delle **città abbandonate** calabresi non è legato a una particolare epoca ma si configura **come** una **costante storica**.

I centri risultano essere molto spesso molto isolati per prevenire ogni azione di attacco e garantire la difesa. Allo stesso tempo l'isolamento veniva attenuato dalla quasi completa visibilità tra un centro e l'altro. La **posizione** stessa del centro era probabilmente studiata anche in relazione alla possibilità di ottenere un'ampia visuale del territorio circostante. A fronte di ciò è però indubbia la difficoltà di accesso ai borghi nonché la stessa difficoltà al sostenimento e al reperimento di un lavoro redditizio. Si unisce a tutto quanto detto la natura e risulta chiaro come la duplicazione del paese avvenga pressoché spontanea quando un evento catastrofico avviene e il borgo diventa **Pase doppio**

40



9 Melissa



10 Strongoli



11 Isola di Capo Rizzuto

● Parte A \ SPOPOLAMENTO \ Paesi doppi



12 Cropani

13 Sella

14 Simeri Crichi

15 Squillace

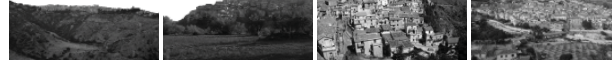


16 Montepaone

17 Soverato

18 San Sostene

19 Sant'Andrea



20 Isca sullo Jonio

21 Badolato

22 Santa Caterina

23 Guardavalle



24 Caraffa del Bianco

25 Africo

26 Ferruzzano

27 Brancaleone



28 Bova

29 Condofuri

30 San Lorenzo

31 Palizzi

41

26





Im 20. Jahrhundert waren insbesondere alte Industriestandorte von Schrumpfung betroffen. Im 21. Jahrhundert könnten es die Bürorstandorte und Distributionszentren (Einkaufszentren) sein. Rationalisierungs- und Verlagerungsprozesse im Dienstleistungssektor sowie sich wandelnde bauliche Anforderungen können an vielen Standorten zu einer sinkenden Nachfrage und Leerstand führen. Regionaler Bevölkerungsrückgang, eine alternde Bevölkerung und zukünftig steigende Mobilitätsanforderungen zudem zur Schrumpfung von Vorstädten führen, die bereits heute etwa in Japan und mancherorts in Nordengland und Deutschland zu beobachten ist. Der Einwohnerrückgang in etwa einem Drittel aller Vorstädte in den USA bereits hingegen bislang vorwiegend auf einer fortschreitenden Suburbanisierung in immer entfernter gelegene Vorstädte.

While in the twentieth century, old industrial bases were primarily affected by shrinkage, in the twenty-first century, these could be office districts and distribution centers (shopping malls). Processes of rationalization and re-location in the service sector as well as changing standards could lead to decreasing demand and vacancy at many locations. Regional population decline, an aging population, and the increasing cost of mobility in the future can also lead to the shrinkage of suburbs, which is currently occurring in Japan, Northern England, and Germany. The population decline in about one third of all suburbs in the United States, however, is so far primarily caused by progressing suburbanization into suburbs that are further and further away from the central city.

WORLD MAP OF SHRINKING CITIES 1950–2000
Cities with more than 100,000 inhabitants



MAJOR URBAN TRANSFORMATION AND TEMPORARY USES

28

In contexts of political, economic, social, environmental, and post-pandemic uncertainty, can temporary uses help design major urban and territorial transformation projects?

How can they accompany long-term regeneration processes and large-scale urban transformations?

How can they activate new imaginaries, test or anticipate uses and functions that, if confirmed, become part of functional master plan programmes?

Temporary uses can help test and adjust projects in *itinere* and accompany the different phases of a long-term masterplan. To do this effectively, new professional figures are needed, such as community and territorial animators, event planners or *placemakers*, and site-specific designers of adaptable and flexible spaces for different temporary uses.

Various actors are involved, interacting, conflicting, and cooperating in major urban transformation projects. The economic value of temporary uses is now recognized by both public and private actors: particularly in contexts where low property values are compensated by the creation of new social capital and the strengthening of territorial image and identity and territorial branding, representing in such situations, professionals

Part 2
module 2a
8 -17 October
2026



MAJOR URBAN TRANSFORMATION AND TEMPORARY USES

who are context-aware and socially sensitive are therefore needed — capable of generating community value first, and subsequently new asset value.

Module 2a will offer opportunities to meet operators, investors, public administrations, and planners, through visits and seminars dedicated to large transformations ongoing in Milan and Italy – including *Agenzia del Demanio, FS Scali Milano, Hines, Nhood, Redo sgr* - are experimenting with adaptability, flexibility, inclusion, and urban landscape transformation by phases.

The module will cover practices and **tools of “Open Urbanism”**; new professional skills and profiles for the **design of spaces for temporary and transitional uses; new competences for the planning and management of temporary uses**; presentation, case analysis, visits and seminars dedicated to large areas in transformation.

**Part 2
module 2a**
8 -17 October
2026

29



Antonella Bruzzese
DASTU Politecnico di Milano, Director



Isabella Inti
DASTU Politecnico di Milano, temporiuso, Co-Director



Ricky Burdett,
Dir. LSE cities, London School of Economics and Political
Science (UK)



Ezio Micelli,
Dir. Master U-RISE, IUAV Venezia



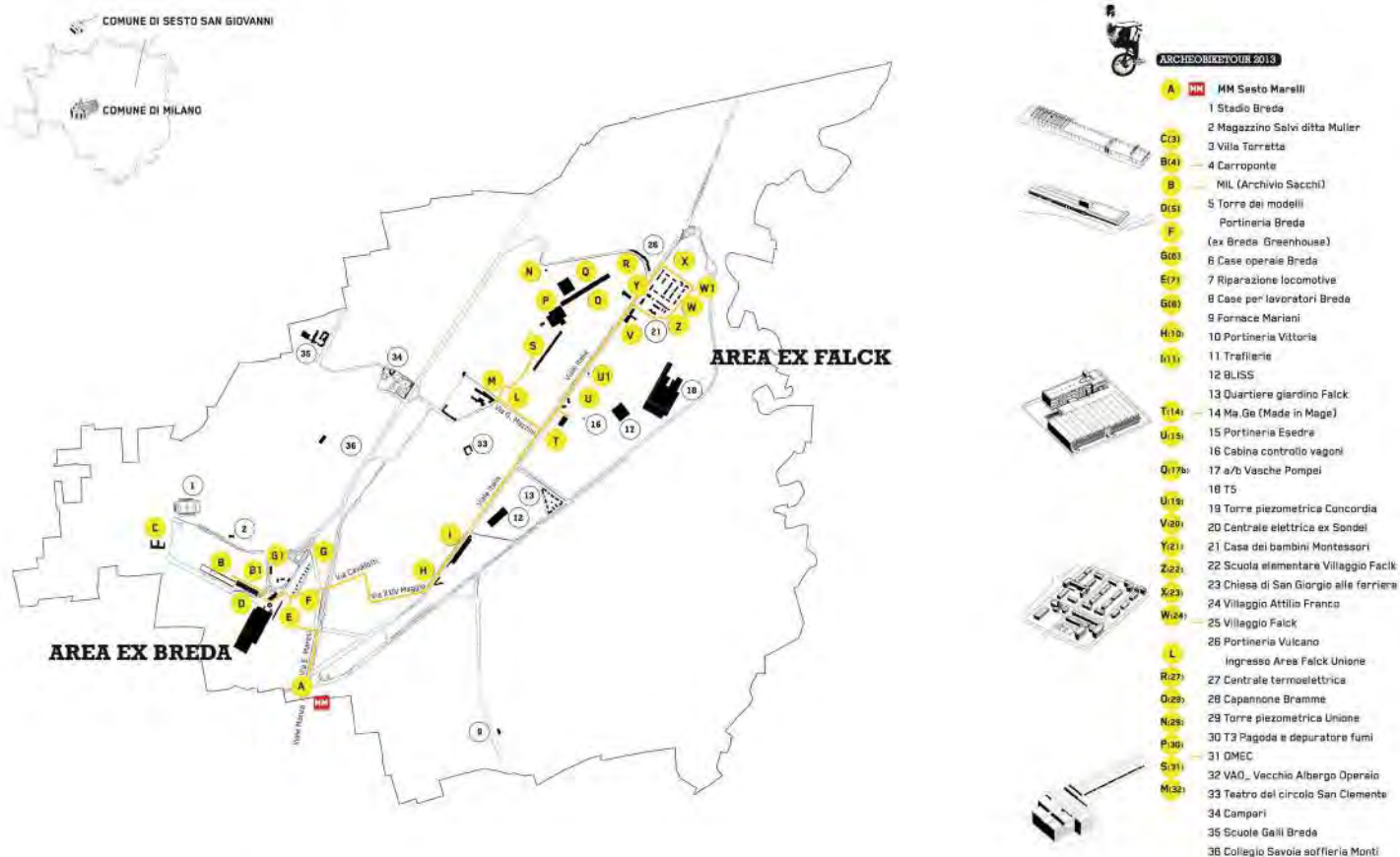
Stefano Boeri
DASTU Politecnico di Milano, Triennale di Milano





photo courtesy: Temporiuso

31



a cura di

parte del progetto

con il sostegno di

in collaborazione con

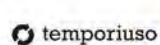


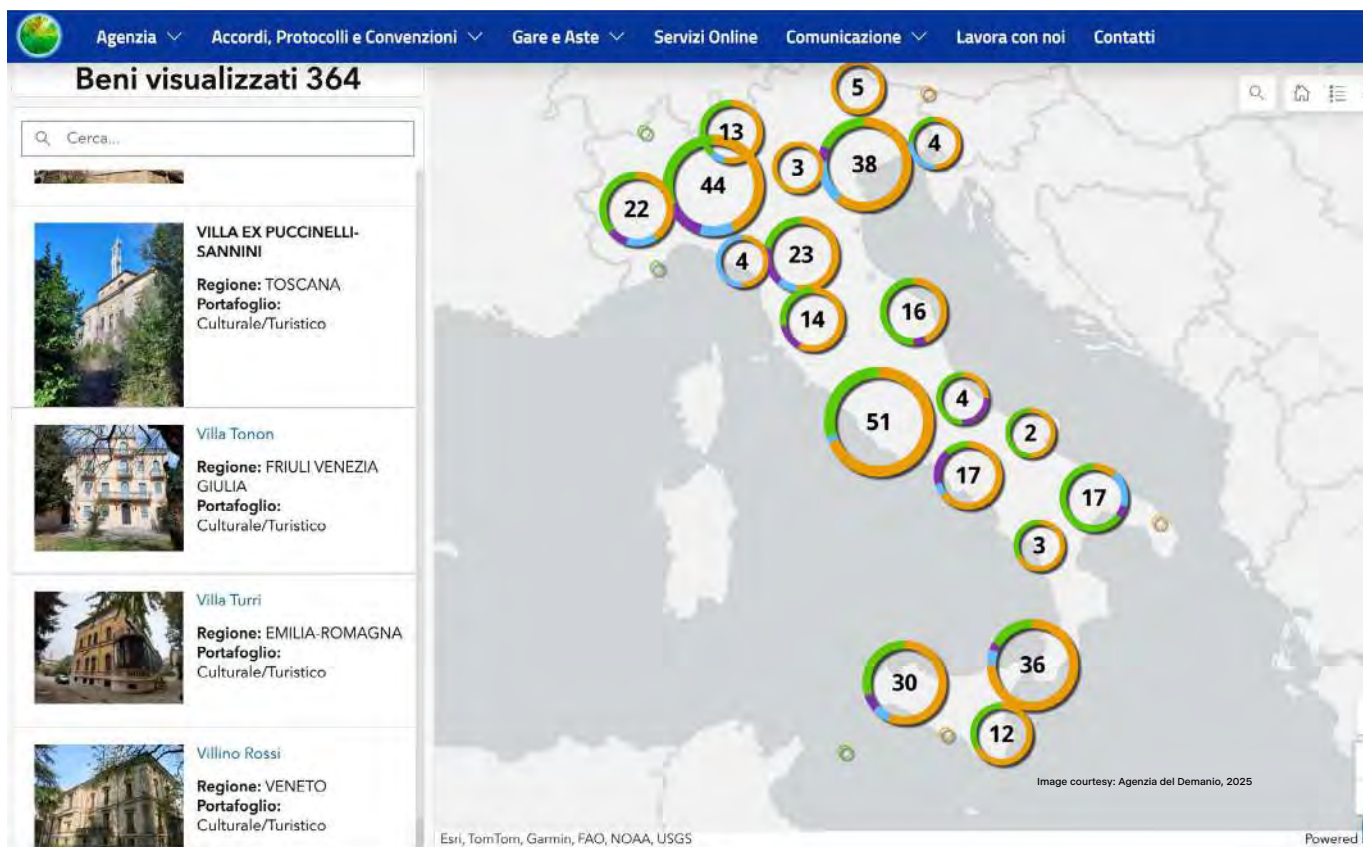


Image courtesy: Temporiuso, 2018

Mercati Generali reciclicity / metabolismo urbano per nuove economie



photo courtesy: Redo sgr, ARIA, 2024



TEMPORARY USES, ARCHITECTURES AND DISTRICTS FOR MID AND LARGE SCALE EVENTS

34

How do large flows of visitors and users of cultural, sporting, religious, or musical events temporarily alter urban space?

What kind of areas or temporary architecture solutions accommodate visitors, changing the demand for housing and services before, during and after the event?

How can these be designed to allow long-term conversion? What vision, tools, and strategies should be adopted to make a major temporary event sustainable and capable of triggering virtuous processes in the area?

Part 2
module 2b
22 October -
6 November 2026

Major events temporarily alter urban spaces and beyond with structures that, in some cases, are meant to change and remain. An "ephemeral urbanism" of Olympic villages, new stadiums, tensile structures, art installations in public space, permanent or removable infrastructure and substructures, modular architecture that can be dismantled and relocated



TEMPORARY USES, ARCHITECTURES AND DISTRICTS FOR MID SCALE AND LARGE SCALE EVENTS

elsewhere — these are among the material **legacies left by major events**. **In order to understand the implications of such big events - geopolitical, social, environmental-**, we need to start observing the facilities that are built and later dismantled, and the equipment that remains in place. Reasoning about how these legacies are reused, by which populations, and with what economic means, while questioning this set of temporary uses, their effects, and the kind of cities they build in the long run, is the goal of Module 2b.

The **Module 2b** will outline the main themes and issues related to **large and medium-sized events: opportunities, risks, impacts, management**. It **will describe** different **types of temporary event "districts", buildings and infrastructures**, focusing on three main categories:

- a. Temporary "districts" for residential, sports, recreational, and religious uses designed with permanent architecture but adaptable and flexible for later conversion;
- b. Districts and villages of prefabricated buildings that can be dismantled at the end of the event, with infrastructure and substructures that are permanent or partially removable;
- c. Temporary infrastructures and ephemeral installations for sports, recreational, religious, and residential uses.

The module will also include visits to Milan Cortina2026 winter Olympics temporary district and facilities, to Italian cities that are European Capitals of Culture, or venues for festivals and events. These visits will include meetings with public institutions and local associative realities, professionals and designers involved. Case studies will be analyzed in terms of their features, procedures, and short- and long-term effects.

Part 2, module 2b_Faculty

TEMPORARY USES, ARCHITECTURES AND DISTRICTS FOR
MID SCALE AND LARGE SCALE EVENTS

36



Antonella Bruzzese
DASTU Politecnico di Milano, Director



Isabella Inti
DASTU Politecnico di Milano, temporiuso, Co-Director

Part 2
module 2b
22 October -
6 November 2026



Joseph Grima
Alcova and Space Caviar



Zachary Jones
DASTU Politecnico di Milano



Ippolito Pestellini,
2050+ agency



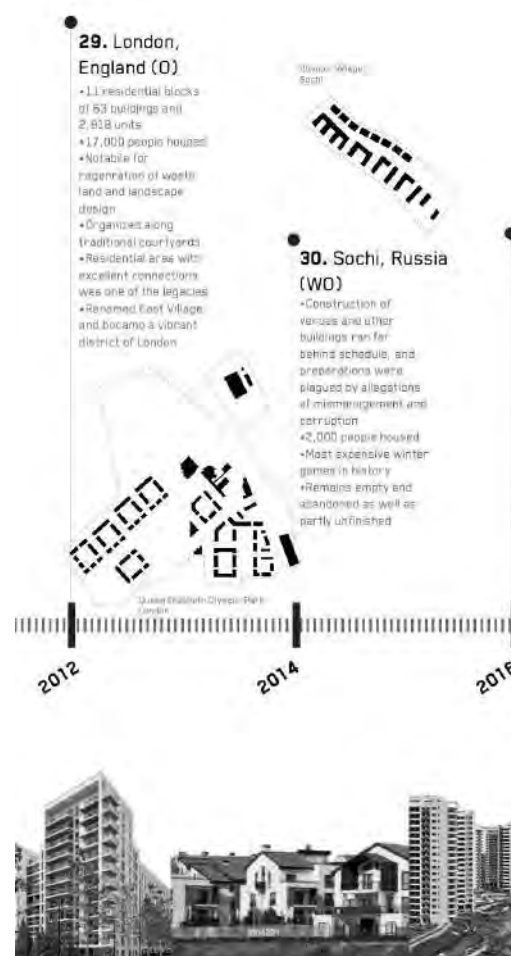
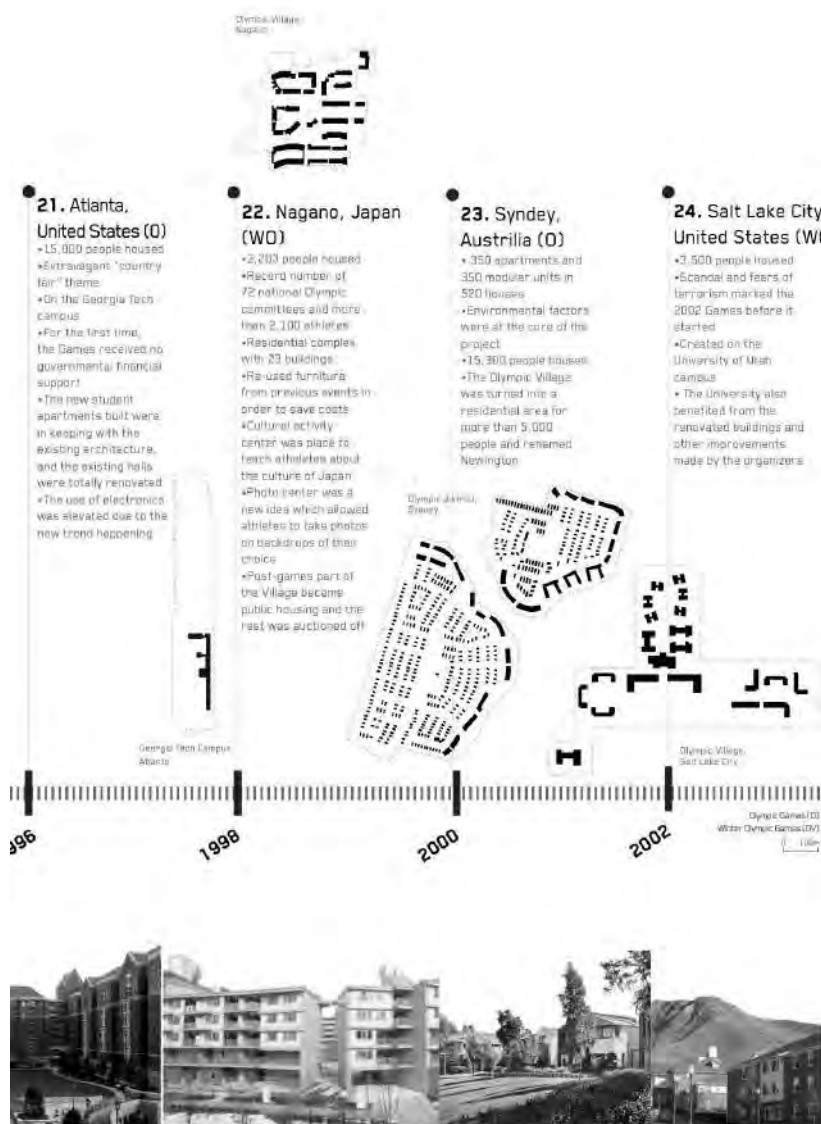
Rahul Mehrotra,
Harvard University, RMA architects (USA)



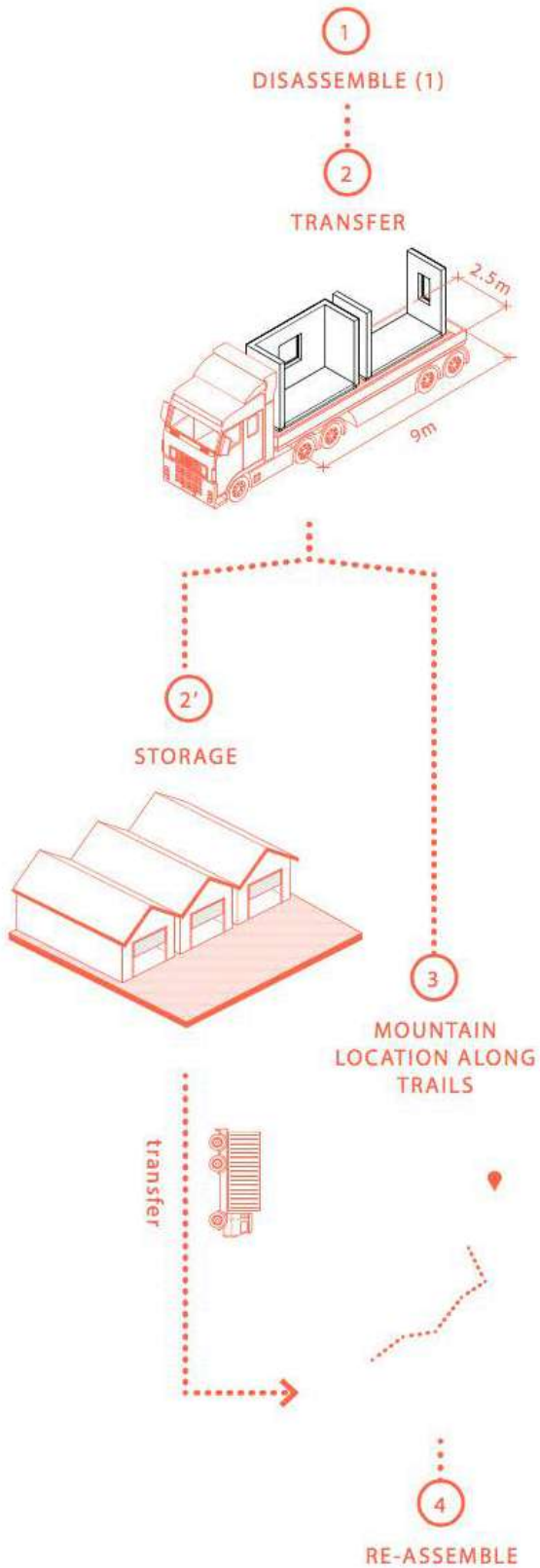
Luca Velo
IUAV Venezia



Davide Ponzini
DASTU Politecnico di Milano



ACCESSIBLE LOCATION



INACCESSIBLE LOCATION

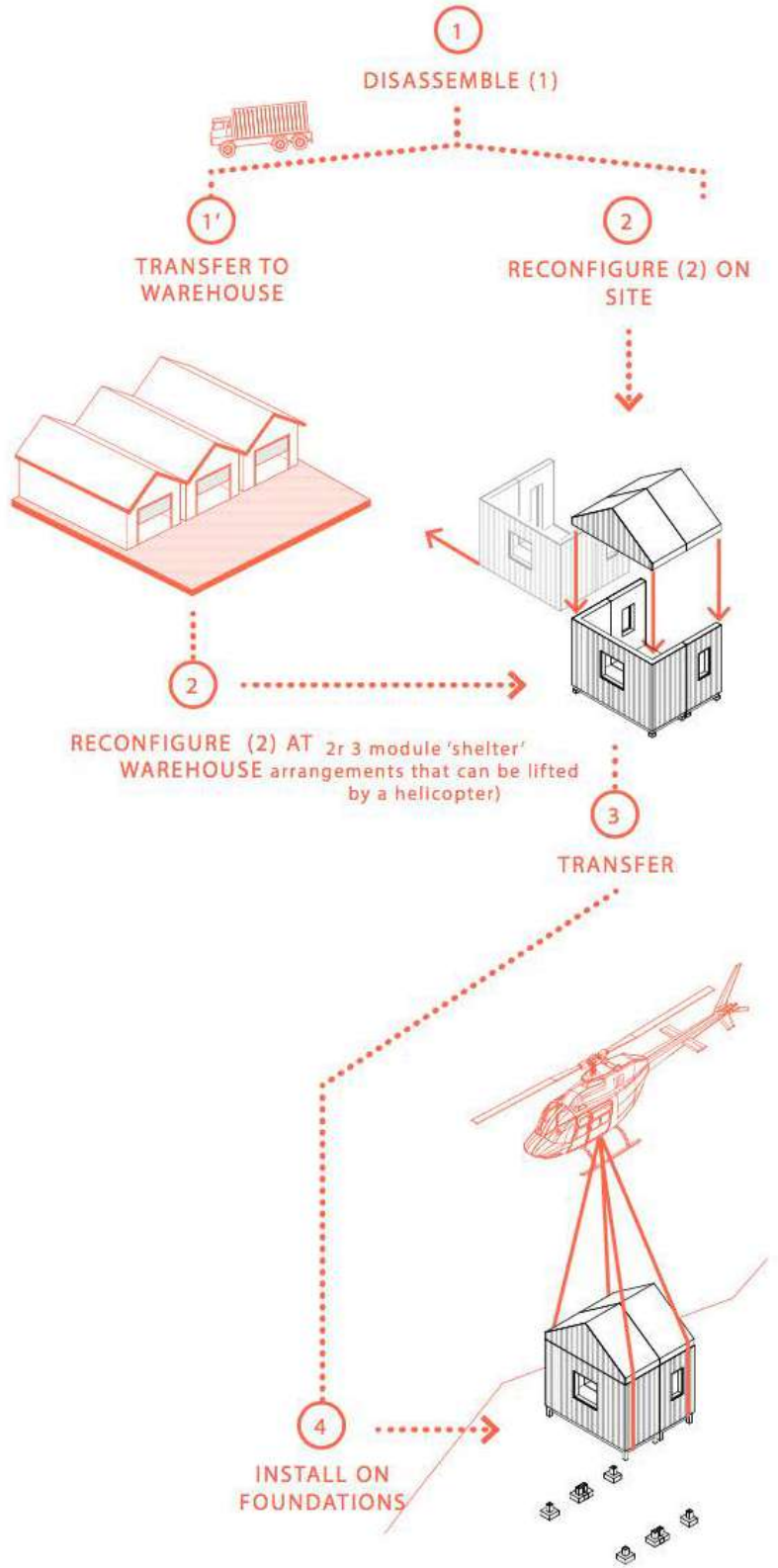




Photo courtesy: I. Pestellini, 2050+ office



photo courtesy: M. Cassani for 2050+

Part 3, module 3a

TEMPORARY USES IN PUBLIC SPACE: PUBLIC ART, COMMUNITY ACTIVATION, SMALL EVENTS

40

How can the design of public space serve as a device for activating social relations?

Conversely, can activities and initiatives taking place in public space contribute to its design?

What devices can enable experimenting with or anticipating new and potential uses of public space?

What skills are required?

Part 3
module 3a
12 - 28 November
2026

By its nature, public space is the scene of heterogeneous, often unpredictable, and temporary uses. Similarly, temporary architecture - from festival installations to construction sites - test public space and its uses. Temporary and reversible interventions can alter perceptions, enable different practices, and construct new meanings within public spaces. Whether in the form of art installations (public art), temporary projects aimed at experimenting (tactical urbanism), or social and emergency activities in public space (temporary uses and settings for leisure or health, related situations such as Covid-19 pandemic). These forms of activation are increasingly recognized as valuable tools for addressing the multiple dimensions of public space, as challenges to be addressed, components of more articulated strategies, or as an unexpected and creative moves.

Module 3a, through examples and case studies, will illustrate the wide variety of forms of temporary activation in public space, the actors involved, the intended and unexpected effects, the conflicts that may arise, and the related potentials and limitations.



Part 3, module 3a_Faculty

TEMPORARY USES IN PUBLIC SPACE: PUBLIC ART, COMMUNITY ACTIVATION, SMALL EVENTS

Topics covered will include: **Tactical Urbanism** practices and tools; Tactical squares: characters, impacts, procedures; **Public art** and the symbolic dimension of activation; **Temporary *dehors*** and forms of land occupation; **Community gardens** and community engagement; **Events ("weeks")** and widespread **social initiatives ("PIDS")**: characters, impacts, procedures.

The module will address with design, strategic, and procedural dimensions of temporary activation in public space.

Part 3
module 3a
12 - 28 November
2026

41



Antonella Bruzzese
DASTU Politecnico di Milano, Director



Isabella Inti
DASTU Politecnico di Milano, temporiuso, Co-Director



Sara Caramaschi
DASTU Politecnico di Milano



Maddalena De Ferrari
Università di Genova



Andrea Minetto
cultural manager and advisor



Demetrio Scopelliti
AMAT Comune di Milano



Marco Tortoioli Ricci
ABA Accademia Belle Arti and ISIA Urbino



Roberto Pinto
Università di Bologna, art curator



Chiara Quinzii and Diego Terna
QTA QuinziiTerna Architecture



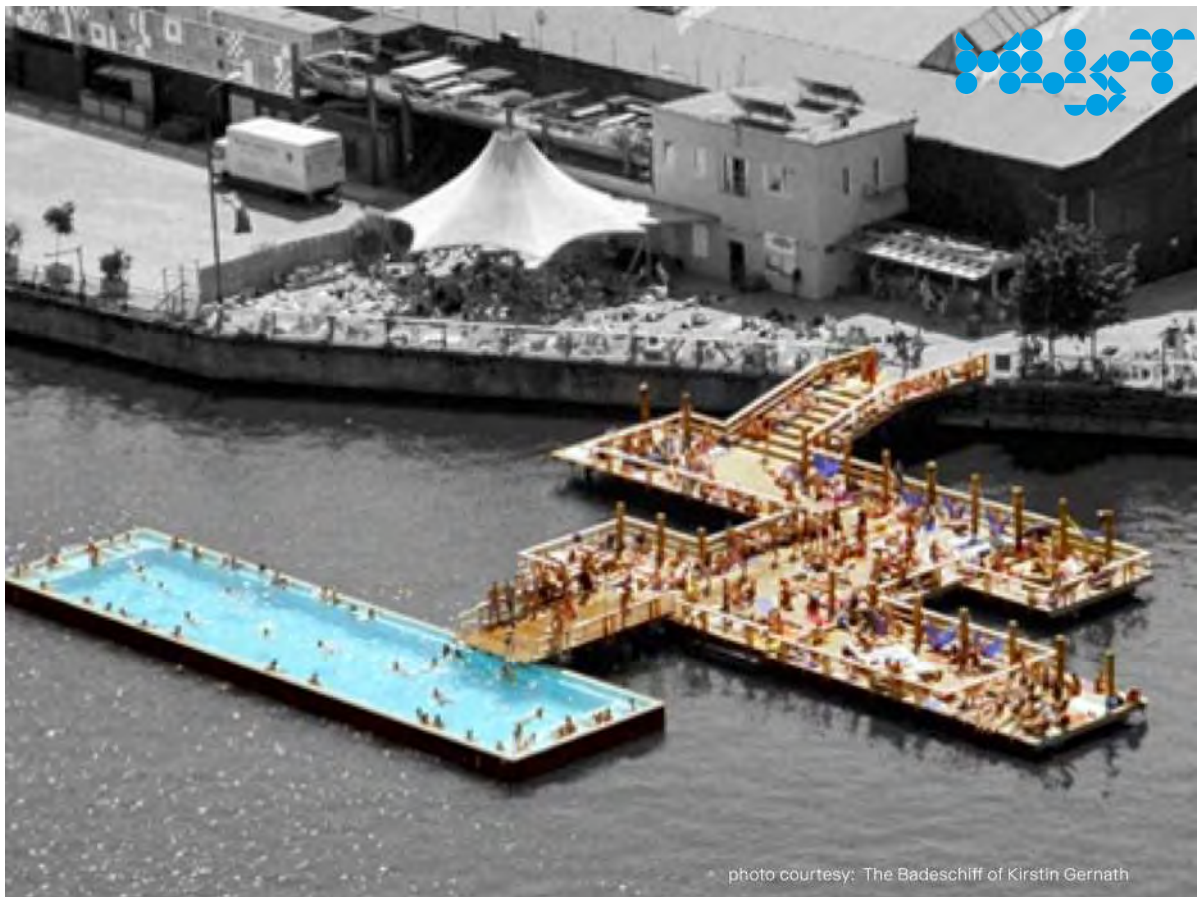


photo courtesy: The Badeschiff of Kirstin Gernath

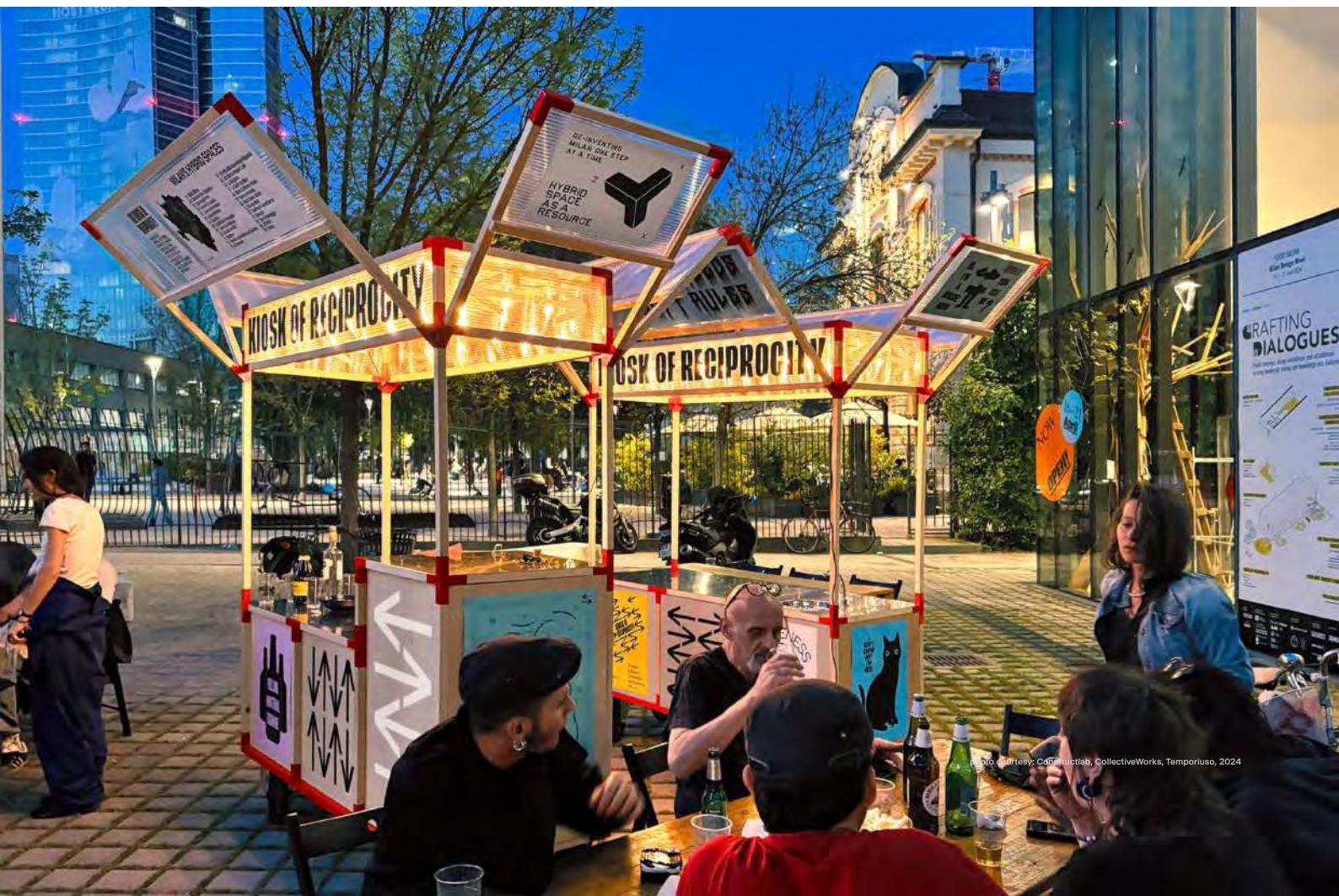


photo courtesy: C&P Constructlab, CollectiveWorks, Temporiuso, 2024



44

photo courtesy: ConstructLab, CollectiveWorks, Temporal, 2022



photo courtesy: CNN news, Prague public lunch on Charles bridge, 2022



45

photo courtesy: A. Bruzese, Milano Piazze Tattiche, 2023



photo courtesy: Interni magazine, Milan Tactical squares, Isola, 2024

Part 3, module 3b

LANDSCAPE AND TEMPORARY USES: LANDSCAPE URBANISM, LAND ART AND WALKSCAPES

46

How do the design disciplines - architecture, urban planning and landscape architecture - manage the dynamic transformations of the landscape?
Especially concerning the environmental and territorial fragilities of many areas, from the natural ones up to polluted brownfields, mining sites, and decommissioned infrastructures?

Part 3
module 3b
3-12 December
2026

Thanks to call for ideas for the redevelopment of fragile areas and the planning of major events in the landscape, since the 1990s, new actors and professional figures - such as landscape architects, ecologists, communicators, and activists - have developed the idea that the landscape can serve as infrastructure: one that intersects, shapes and metabolizes different systems, reorganizing them by making them adaptable over time to economic, political, social and environmental uncertainties.

Landscape Urbanism, in particular, outlines ways and forms of landscape planning with projects capable of adapting, shaping, and recreating urban ecologies over time.

Module 3b will address temporary uses in relation to landscape design according to three families of interventions:

Temporary interventions in the landscape as anticipation of new scenarios and modes of use (from the tradition of BUGA_German temporary gardens to landscape reclamation during project phases of industrial sites, military areas, and landfills);



Part 3, module 3b_Faculty

LANDSCAPE AND TEMPORARY USES: LANDSCAPE URBANISM, LAND ART AND WALKSCAPES

Temporary art installations and infrastructures in the landscape that reinvent its imagery, re-signify it, and often recreate unexpected effects. The third family/one concerns **Temporary events in the landscape** (concerts, festivals, religious processions, walks, and transurbanities), their dimensions, impacts, and forms of reversibility.

Part 3
module 3b
3-12 December
2026

47



Antonella Bruzzese
DAStU Politecnico di Milano, Director



Isabella Inti
DAStU Politecnico di Milano, temporiuso, Co-Director



Francesco Careri
Università Roma Tre, Stalker



Antonio Longo
DAStU, Politecnico di Milano



Paolo Piacentini
founder Federtrek, writer



Stefan Tischer
DADU, Università degli Studi di Sassari;
Landworks; Harvard University (USA)



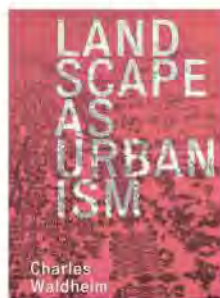
Andrea Maspero and Paola Serrittu
Landworks



MANIFESTE DU TIERS PAYSAGE

2001

Downsview Park | Toronto, (CDN)



Charles Waldeheim



3. Labirinto, Villa Arconati, Bollate, 2019. ©Achille Mauri



photo courtesy: Fosbury architecture



photo courtesy: M-US-T Politecnico di Milano, landscape workshop summer 2025



TEMPORARY USES AND ARCHITECTURES IN NATURAL DISASTER RECOVERY

52

What vision, tools, strategies, and projects are needed to deal with post-disaster “interim time” between the emergency phase and the reconstruction phase?

How can we design spaces, infrastructures, and new temporary neighbourhoods —which are temporary but usually last months and often years– to ensure housing quality and to enhance the environmental, social, and cultural values of damaged places?

How can local populations be involved and govern the different flows - of temporary residents or even tourists - in a new solidarity economy and manage heritage?

Part 4
module 4a
7-15 January
2027

The climate change crisis has made catastrophic phenomena increasingly frequent, which we must learn to manage structurally at different stages. This means paying attention not only to the initial emergency phase, but also to the “interim time” between emergency and permanence, and equipping cities and territories with tools to ensure architectural and urban quality as



well as appropriate attention to local environmental and social contexts. Dealing with reconstruction processes that aspire to enhance cities, historic villages, and landscapes - starting from the "common ground" of local people's tangible and intangible heritages - requires addressing many issues, from activating local production chains to fostering forms of collaborative welfare. A complex approach is needed, one that goes beyond the post-natural disaster reconstruction models (earthquakes, mudslides, landslides, floods) of "where it was, as it was", "new towns" or "satellite neighborhoods" or "SAE Villages -Emergency Housing Solutions" implemented over the past sixty years.

Module 4a will address these issues by covering the following topics: providing an overview of post-disaster reconstruction methods and procedures of public entities and institutions; illustrating examples of **projects and strategies for the phases of emergency (emergency shelter), housing transition (temporary housing) and reconstruction (permanent housing)**, analyzing best practice cases of post-disaster neighborhoods, architecture and infrastructure in the "in-between time."

The module will also examine cases of permanent precariousness, such as slums, *favelas*, *barriadas*, and shantytowns. What role do the professions of architects, international cooperation organizations, and NGOs play in housing transitions, including self-build initiatives and apprenticeship workshops in informal settlements? Lectures and seminars will be enriched by the narration of visits and trekking in the "changed lands" accompanied by photographers, writers, cultural associations and local institutions.

Part 4
module 4a
7-15 January
2027

53



Antonella Bruzzese
DAStU Politecnico di Milano, Director



Isabella Inti
DAStU Politecnico di Milano, temporiuso, Co-Director



Alejandro Aravena,
Elemental (RCH), DAStU Politecnico di Milano - TBC



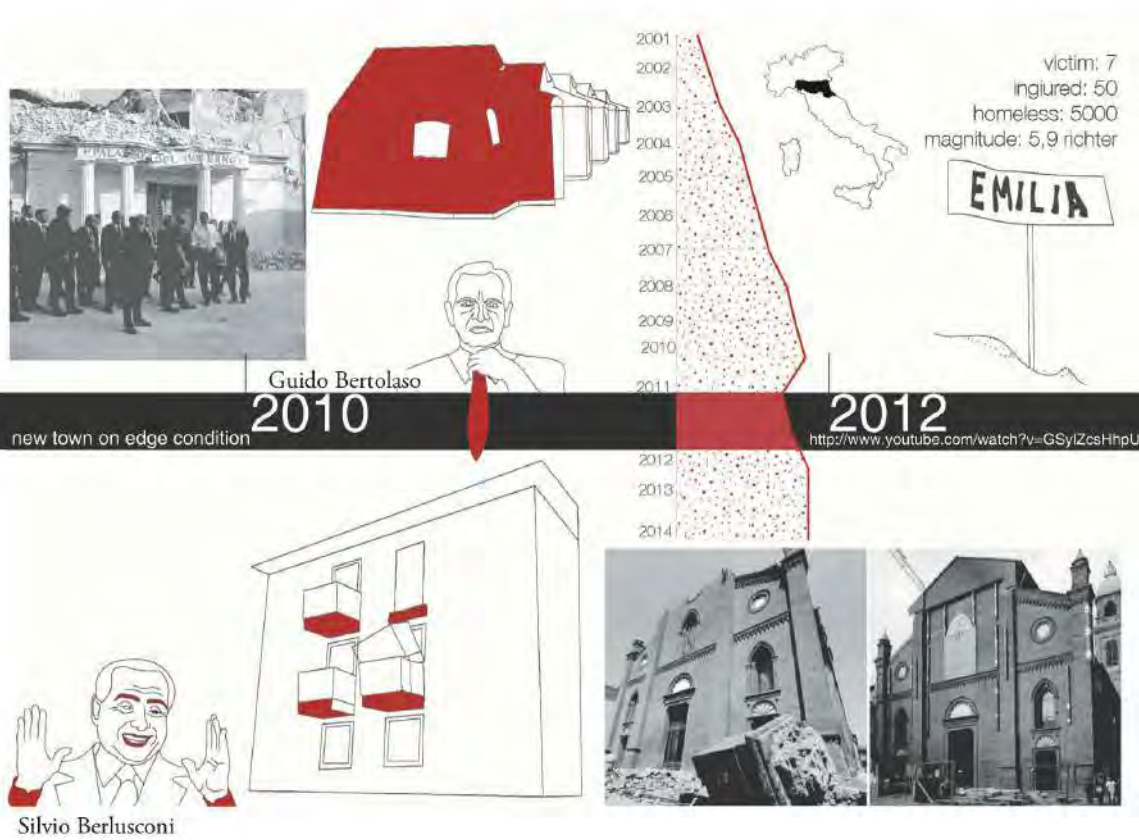
Camillo Magni
DAStU Politecnico di Milano, ASF-Architetti Senza
Frontiere Italia



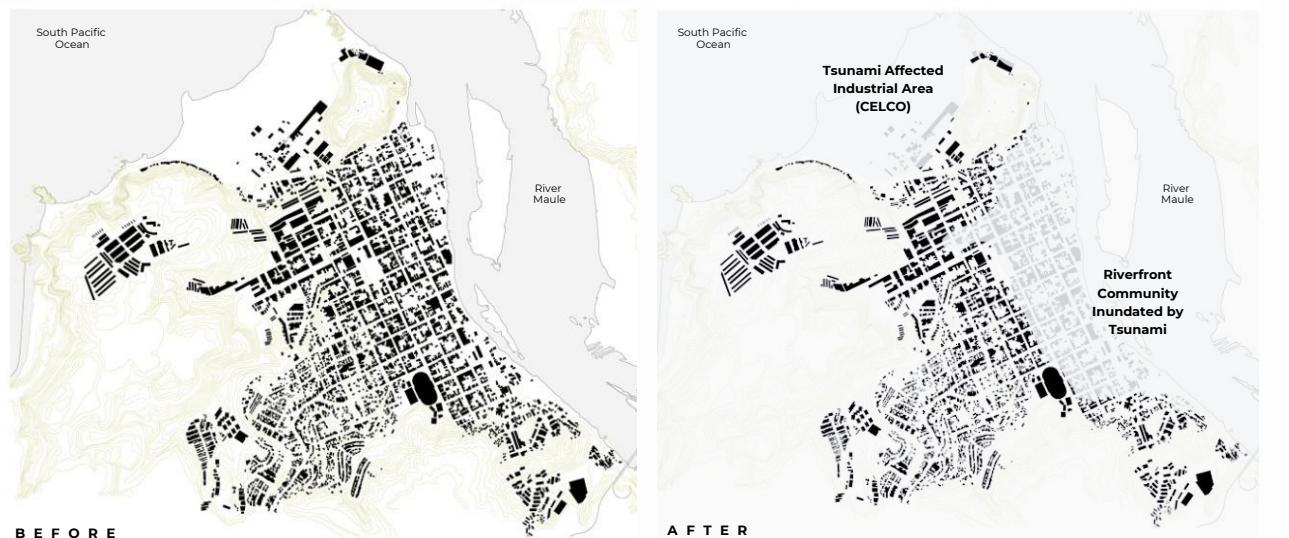
Andrea Gritti
DAStU Politecnico di Milano



Ilaria Tonti
DAStU Politecnico di Torino

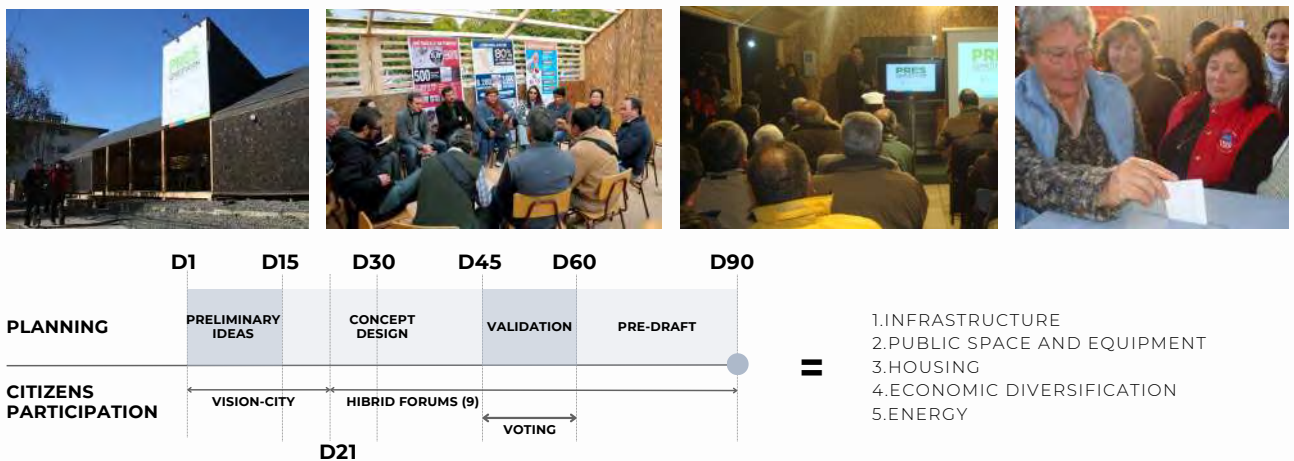






Prieto Peinado, Maria & Fernandez de Valderrama, Luz. (2016). Universidad y cooperación: Reconstrucción en Chile tras el terremoto tsunami de 2010. Revista Brasileira de Planejamento e Desenvolvimento. 5. 152. 10.3895/rbpd.v5n1.4450.

56





57

photo courtesy: Filippo Romano



photo courtesy: Filippo Romano

TEMPORARY USES AND ARCHITECTURES IN POST-WAR AND HUMANITARIAN RECONSTRUCTION

58

What vision, tools, strategies, and projects do we need to address the post-war "interim time" between the emergency phase and the humanitarian reconstruction phase?

How can we design spaces, infrastructures, and new neighborhoods - which are temporary but usually last months and often years - to ensure housing quality and value to the environmental, social, and cultural components of damaged places? How to involve local populations and govern the different flows - of refugees but also of temporary residents or even tourists - in a new solidarity economy to care for, and manage heritage?

Part 4
module 4b
21-29 January
2027



TEMPORARY USES AND ARCHITECTURES IN POST-WAR AND HUMANITARIAN RECONSTRUCTION

This module will examine post-disaster planning by introducing a range of practices that address the successive **phases of reconstruction**: the initial stage of emergency shelter, **the intermediate phase of housing transition and temporary accommodation**, and the final stage of permanent reconstruction. Particular attention will be devoted to the notion of *permanent temporariness*, discussed in dialogue with experts and illustrated through case studies such as Palestinian camps and villages, the *Camp in Camp* project, fixed and mobile camps, and situations of permanent occupation or impermanent housing.

A further area of investigation will focus on the transition *from transitional housing to masterplan reconstruction*, with reference to post-war adaptive masterplan transit initiatives in Ukraine. A third field of inquiry will address *transitional housing versus self-organised reconstruction*, drawing on the case of Pristina's decade-long process of transformation from temporary to permanent housing, including the redevelopment of public spaces and the preservation of both material and immaterial heritage.

Part 4
module 4b
21-29 January
2027

59



Antonella Bruzzese
DASTU Politecnico di Milano, Director



Isabella Inti
DASTU Politecnico di Milano, temporiuso, Co-Director



Valeria Fedeli
Dir. Centro Competenze Territori AntiFragili –DASTU,
Politecnico di Milano



Alessandro Petti and Sandi Hilal
DAAR, Royal Institute of Art Stockholm,
Lund University (SE)



Rozafa Basha
University of Prishtina "Hasan Prishtina"(RKS)

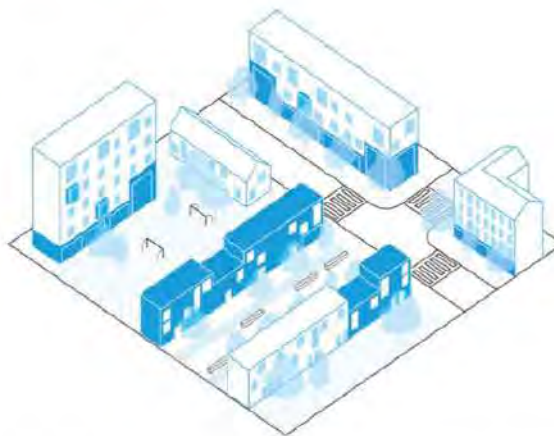


60

Photo: Camps in Palestine © UNCHR



Photo: Camp in Camp, Palestine © DAAR Decolonizing Architecture Art Research



As the reconstruction of Mykolaiv begins, one of the most critical long-standing obstacles to overcome will be to provide affordable and permanent housing for both the existing population and generations to come. Pilot Project 1 will explore the redevelopment of a residential site within the city boundary. The project will include the refurbishment and retrofitting of existing residential building, as well as the introduction of new housing elements to the scheme. The urban fabric will be analyzed in order to understand how much of it can be regenerated through the use of sustainable strategies such as: improved insulation for energy efficiency, retrofitted modular add-ons to increase surfaces, revamped vertical circulation, and active renewable energy generation on a block level. Housing reconstruction will be promoted with a circular approach, making use of local industries, and recycling debris. Housing neighbourhoods will be considered as part of this project. Three building blocks will be selected as case studies.

З початком реконструкції Миколаєва однією з найважливіших довготривалих перешкод, яку необхідно подолати, буде забезпечення доступного та постійного житла як для нинішнього населення, так і для наступних поколінь. Перший пілотний проєкт вивчатиме питання реконструкції житлового масиву в межах міста. Проєкт включатиме реконструкцію та модернізацію існуючих житлових будинків, а також введення нових житлових елементів у схему забудови. Буде проаналізовано міську структуру, щоб зрозуміти, наскільки вона може бути регенована за рахунок використання сталих стратегій, таких як: покращена ізоляція для підвищення енергоефективності, модернізовані модульні надбудови для збільшення поверхонь, оновлена вертикальна циркуляція та активна генерація відновлюваної енергії на рівні кварталів. Реконструкція житла відбудуватиметься із застосуванням циклічного підходу, з використанням місцевої промисловості та переробкою сміття. Житлові квартали будуть розглядатися як частина цього проєкту. Три будівельні блоки будуть обрані в якості тематичних досліджень.



Image top-right: Mykolav Reconstruction Maserplan, Ukraine | One Works

61



WHSP?

WHAT HAPPENS TO THE STREETS OF PRISHTINA?
Temporary architecture and elective community devices

International Summer University 2013 | KOSOVO
22nd July - 2nd August 2013 | University of Prishtina "Hasan Prishtina"

1_ COMPENSATION GREEN AREAS MAINTAINED BY ENCLAVES PROJECTS

Visiting Professor: Isabella Inti, Faculty of Architecture Politecnico di Milano University
Co-Professor: Rezaa Basho, Faculty of Civil Engineering and Architecture, University "Hasan Prishtina"
Experts involved: Giulia Cantaluppi, Ass. tempuruso.net, Italy (Güver Mydyt), PhD candidate Politecnico di Milano, PhD Marie la Valérie Paris
Students: Michela Dell'Orto, Vincenzo Meuli, Erza Raskova, Binlian Salim

REGISTRATION, RELEVANT DATES, LOCATIONS, CONTACTS





more to know

REGISTRATION, RELEVANT DATES, LOCATIONS, CONTACTS

Calendar

Beginning of Master:

TIMEFRAME
June 2026 -
September 2027

63

Introduction	18 June -26 June 2026
Module 1a	10 September - 26 September 2026
Module 1b	1 October - 3 October 2026
Module 2a	8 October - 17 October 2026
Module 2b	22 October - 6 November 2026
Module 3a	12 November - 28 November 2026
Module 3b	3 December - 12 December 2026
Module 4a	7 January - 15 January 2027
Module 4b	21 January - 29 January 2027
Internship	February - August 2027
Workshop	June 2027
Final thesis	September 2027

Frequency: the Master will be held for **2 and half days a week (Thursday, Friday and Saturday morning)**. **Attendance is compulsory for at least 75% of the lessons.**

The Master will be held in English in a blended mode. Face-to-face lessons will be held at Politecnico di Milano, Campus Bonardi.

Final thesis can be written in English or Italian language.

more to know

TITLE, CFP, REGISTRATION, RELEVANT DATES, LOCATIONS, CONTACTS

64

Admission requirements

The **I level Master Course** is for candidates with a Laurea (equivalent to Bachelor of Science Degree), while the **II level Master Course** is for candidates with a Laurea V.O. or Laurea Specialistica/ Magistrale N.O. (equivalent to Master of Science Degree) in:

- technical-scientific field of Architecture, Urban Planning, Landscape;
- social-humanistic field, with reference to Anthropology and Cultural Heritage;
- economic-environmental field;
- communication and marketing field, with reference to Promotion and Enhancement of existing resources.

Candidates graduated in related disciplines as well as graduates with professional experience in the same subjects will also be eligible. For foreign candidates, equivalent qualifications in the respective study systems will be considered.

How to apply

To apply, please, follow the instructions available here:
<https://www.polimi.it/en/education/specializing-masters-and-postgraduate-programmes/how-to-apply-to-specialising-masters-and-post-graduate-programmes>.

The application has to be presented by **January 18th, 2026**.

Selection of candidates: **January 21st-22nd, 2026**.

Communication of the selected candidates with scholarships and grants: **January 23rd, 2026**.

Candidates will be selected by the Master Scientific Committee based on the analysis of the Curriculum Vitae and on the candidates' profile. When applicable, and upon prior notice, interviews may be conducted online.

TIMEFRAME

June 2026 -

September 2027



Title issued and CFU/ETCS

At the end of the Master, upon passing the final exam, will be issued the **M-US-T Master Temporary Uses diploma of 1st and 2nd level of Politecnico di Milano**. Politecnico will also release **60 CFU/ECTS**.

TIMEFRAME
June 2026 -
September 2027

65

CFP

At the end of the Master, Italian Engineers and Architects, Planners, Landscapers and Conservationists can have their **Professional Training Credits (CFP)** recognized according to the guidelines established by the respective Orders to which they belong.

Fee, scholarships and grants

The cost is 10.500 euro for each student, to be paid in **3 installments**:
€ 3.500 before February 2nd, 2026; € 500 (registration fee) before February 11th, 2026; € 3.500 before June 15th, 2026; € 3.000 before November 30th, 2026.

The fee includes lectures and study materials, discussion seminars, orientation to the thesis and internship, participation in the workshop (travel and accommodation expenses).

Scholarships and reductions are defined:

1 scholarship provided by **REDO sgr** > 50% fee

1 scholarship provided by **FHS_Fondazione Housing Sociale** > 50% fee

2 scholarships provided by **M-US-T committee** > 25% fee

1 reduction for M-US-T **tutoring** > 15% fee (for italian speaking student)

For Italian students, possibility of requesting a **loan of honor** from Intesa San Paolo.

<https://www.polimi.it/studenti/tasse-borse-e-agevolazioni> .



Information

For general information:

EDUCATION AND TRAINING OFFICE

POLIEDRA - Politecnico di Milano

Elena Signò | Email: formazione-poliedra@polimi.it

phone: +39 02 2399 2925 / +39 02 2399 2902 / +39 02 2399 2942

https://www.poliedra.polimi.it/en/must_eng/

For content information:

DASStU, Politecnico di Milano

Antonella Bruzzese, antonella.bruzzese@polimi.it

Isabella Inti, isabella.inti@polimi.it

Graphic concept thanks to: **Marco Tortoioli Ricci**, ISIA Urbino

Edited in December 2025

TIMEFRAME

June 2026 -

September 2027



DEPARTMENT
OF ARCHITECTURE
AND URBAN STUDIES

craft

competence center
anti-fragile territories



● **Poliedra**
POLITECNICO DI MILANO

