

ENVIRONMENT

TRANSPORT

CULTURE

PARTICIPATION

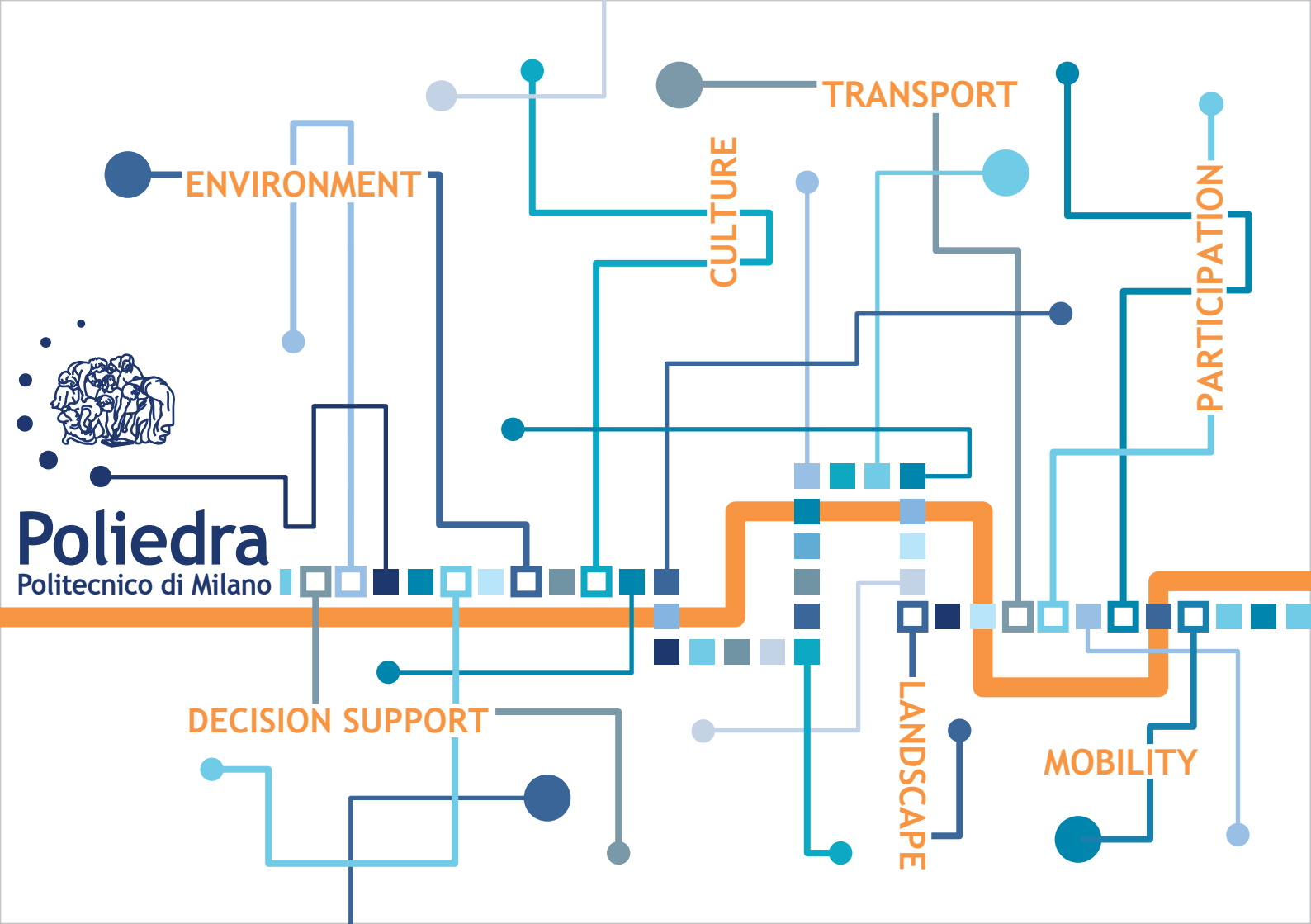


Poliedra
Politecnico di Milano

DECISION SUPPORT

LANDSCAPE

MOBILITY





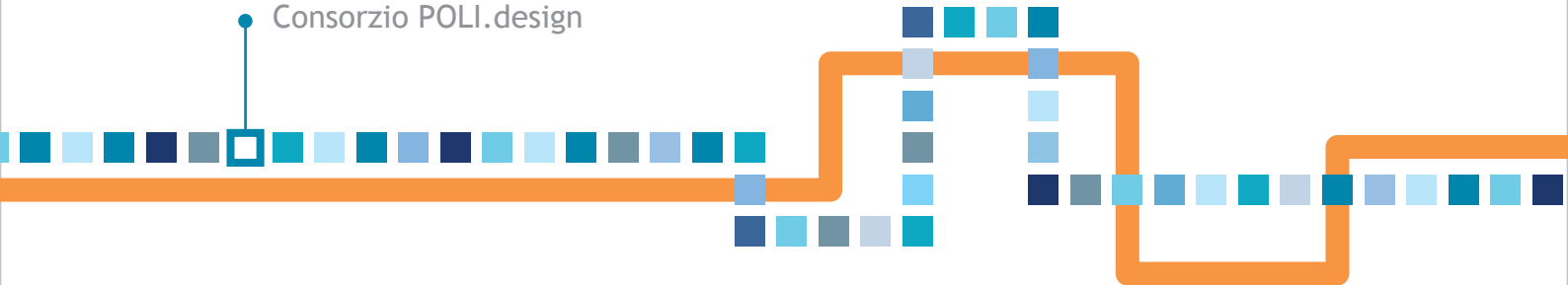
About us

Poliedra is a consortium at Politecnico di Milano. It provides consultancy and applied research services focusing, through multidisciplinary expertise, on the interpretation and management of complexity within decision processes.

We support public and private institutions driving decision processes on environment, mobility and transport, culture and landscape towards **sustainability.**

Consortium members

- Politecnico di Milano
- MIP - Politecnico di Milano SCpA
- CEFRIEL SCRL
- Consorzio POLI.design

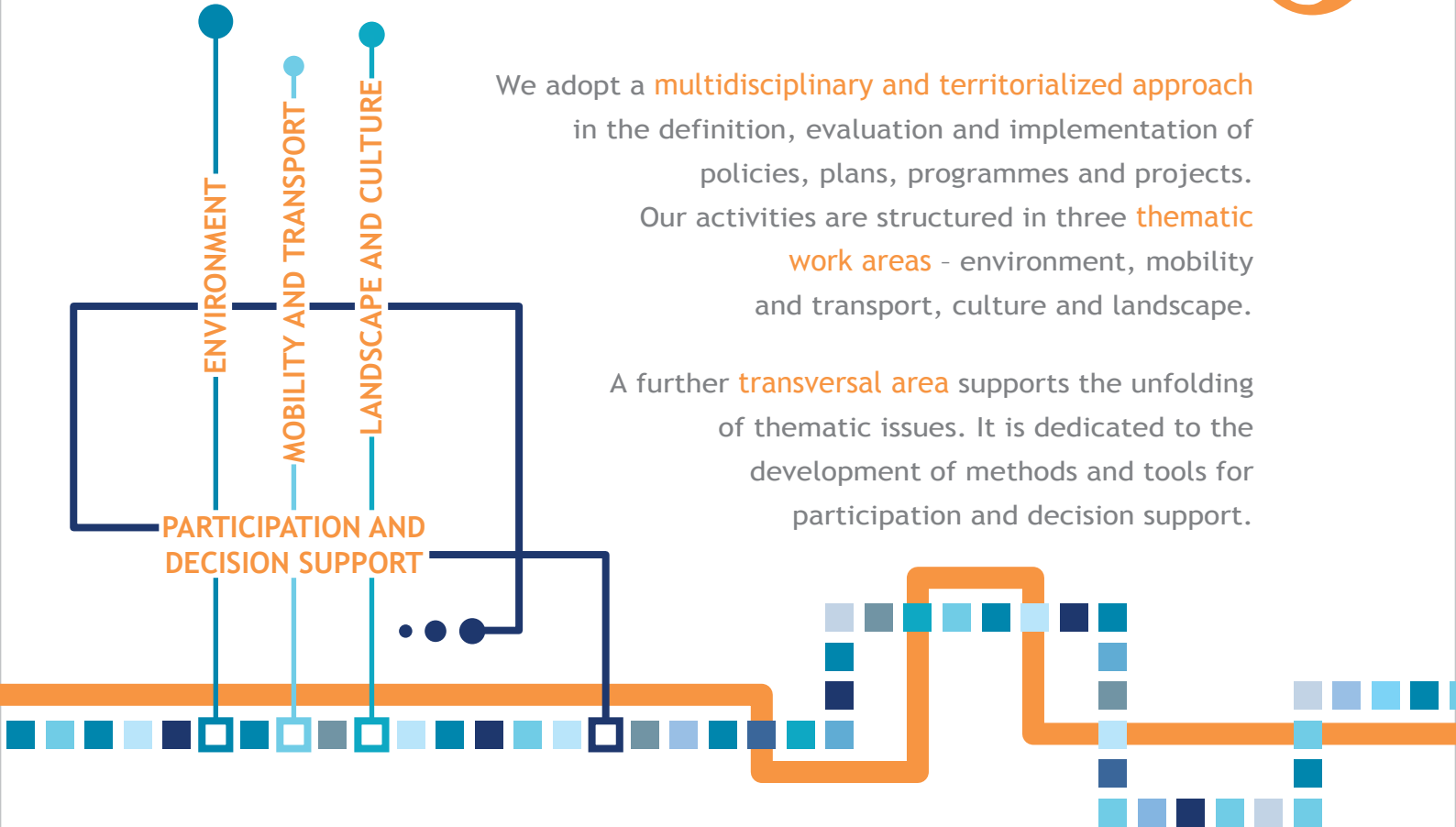


Our approach



We adopt a **multidisciplinary and territorialized approach** in the definition, evaluation and implementation of policies, plans, programmes and projects. Our activities are structured in three **thematic work areas** - environment, mobility and transport, culture and landscape.

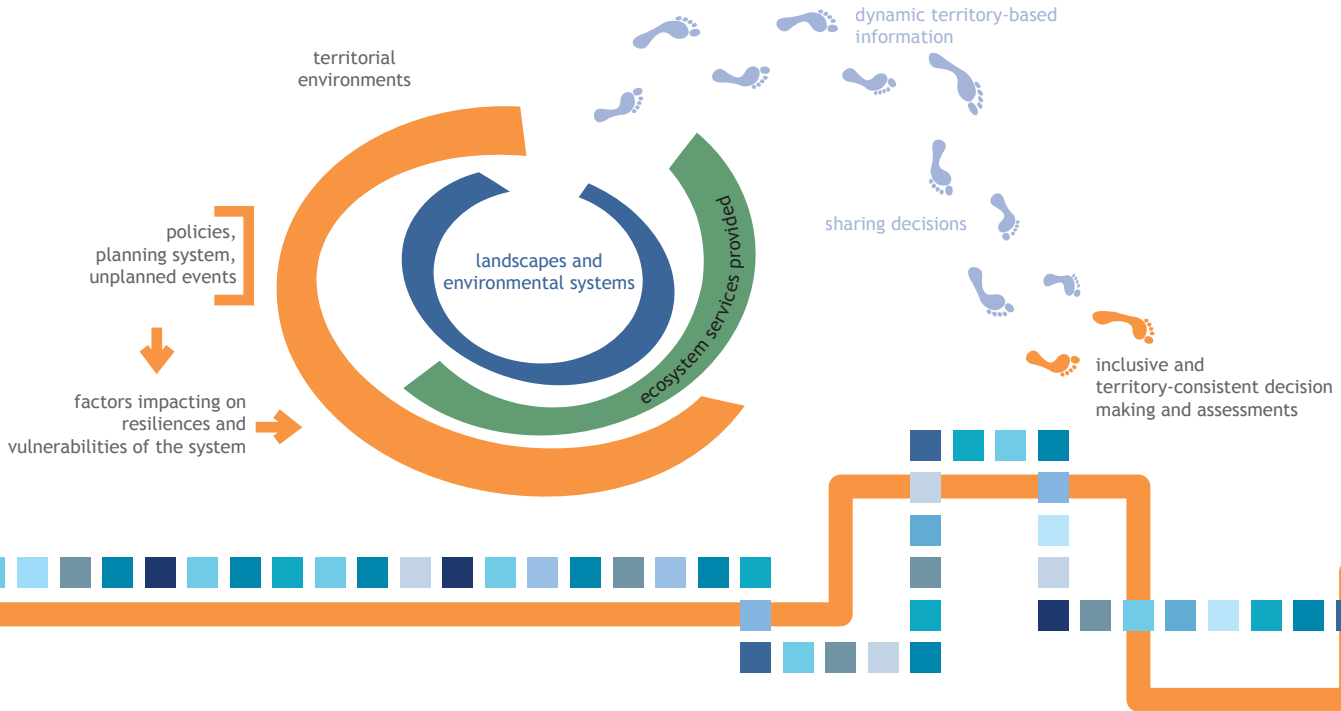
A further **transversal area** supports the unfolding of thematic issues. It is dedicated to the development of methods and tools for participation and decision support.





Environment

We adopt approaches, methods and tools based on the analysis of the **territorial dynamics** occurring within the environment-landscape system, aiming at enhancing its **resilience** and countering its **vulnerability**. Such approach shapes the development of methodologies and guidelines, as well as our training and consulting activities.



Technical assistance for the **integration of environmental concerns** and the mainstreaming of environmental governance issues into EU co-funded programmes

Initiatives for the sustainable development of **urban and peri-urban areas**, by means of actions directed towards smart cities and a sharing economy

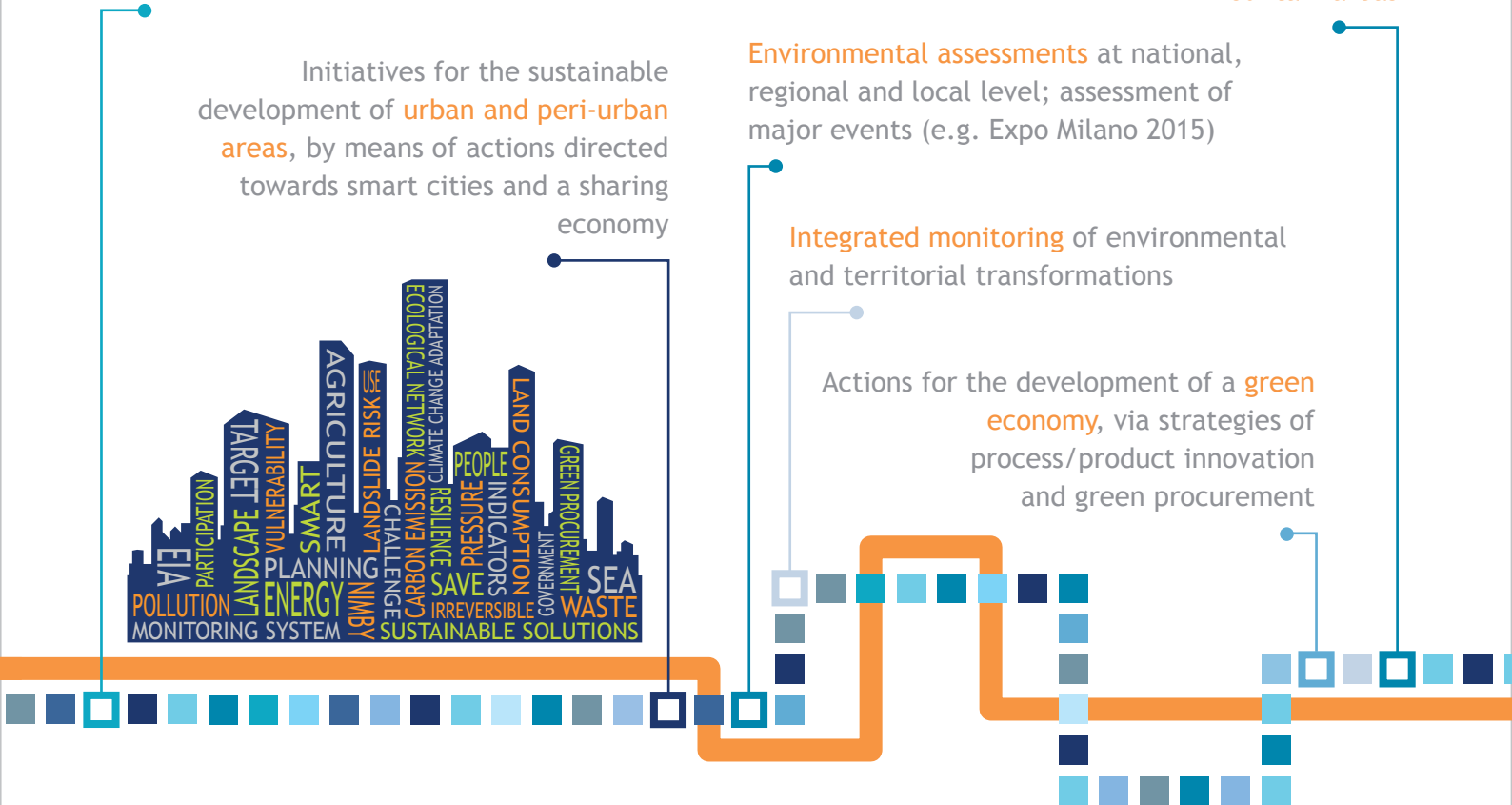


Tools and methods for **local development**, integrated planning and capacity building, particularly in **rural and mountain areas**

Environmental assessments at national, regional and local level; assessment of major events (e.g. Expo Milano 2015)

Integrated monitoring of environmental and territorial transformations

Actions for the development of a **green economy**, via strategies of process/product innovation and green procurement





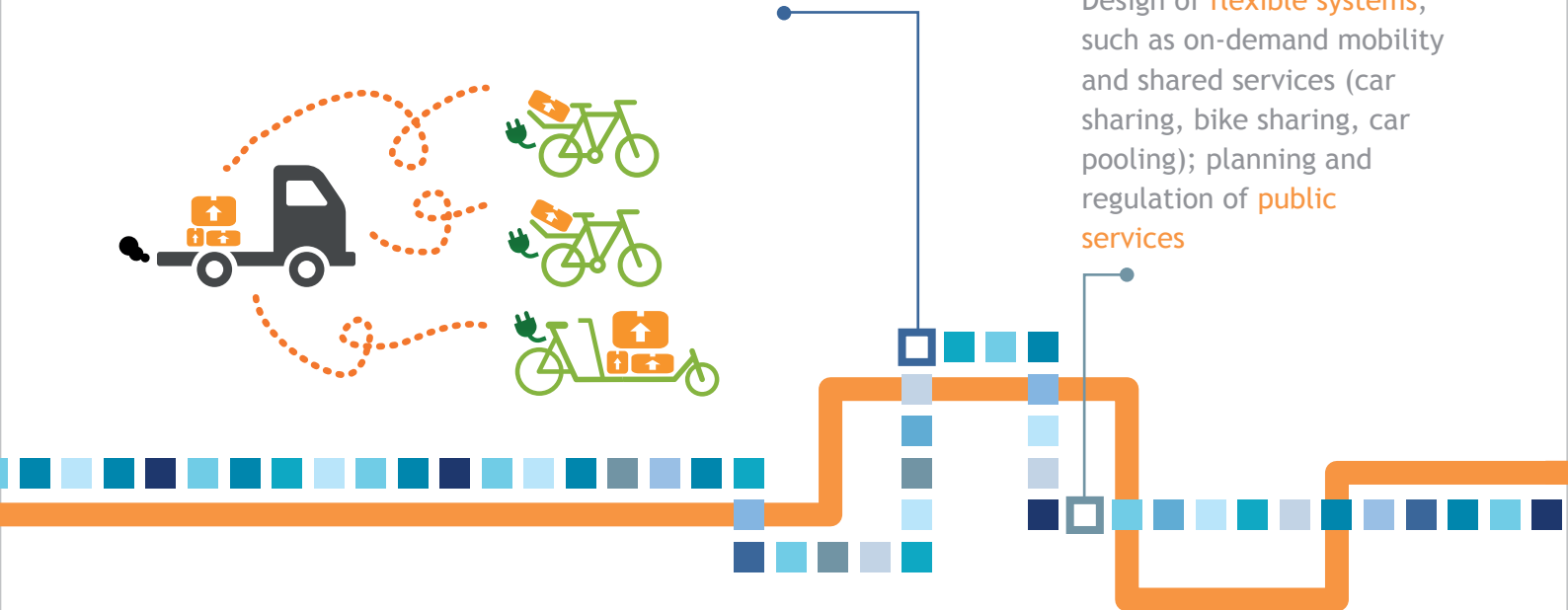
Mobility and transport

We operate to foster **smart**, **green** and **multimodal** mobility solutions, to facilitate accessibility to territories and livability of urban areas.

Design of **demand management policies** (e.g. access and parking regulations, rewarding mechanisms); implementation of **mobility management measures**



Design of **flexible systems**, such as on-demand mobility and shared services (car sharing, bike sharing, car pooling); planning and regulation of **public services**



Design of services and algorithms for the optimization of **freight transport** and **urban logistics**, including the use of bicycles and electric vehicles

Planning of **bicycle and pedestrian** mobility in an intermodal perspective, supported by techniques of **safety analysis** and methods for the **promotion** of soft mobility

Analysis and design of **traveler information** systems; definition of models for the integration of user-generated information (crowd-sourcing)





Culture and landscape

We support the development of innovation and regeneration processes for the dissemination of knowledge concerning cultural heritage and landscape.

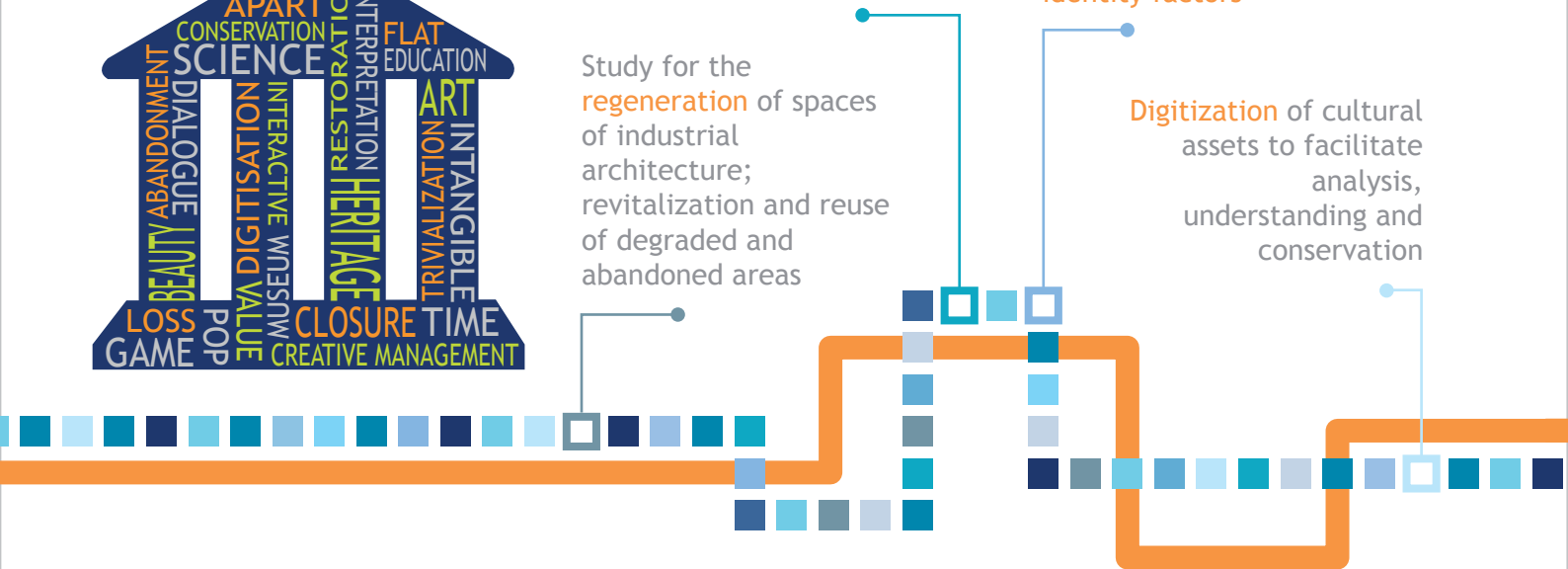


Analysis and assessments for the **management** of landscape and cultural heritage in planning processes

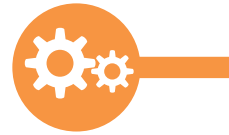
Study for the **regeneration** of spaces of industrial architecture; revitalization and reuse of degraded and abandoned areas

Conservation and valorization of cultural heritage, both material and non-material; **education** to heritage and rediscovery of **identity factors**

Digitization of cultural assets to facilitate analysis, understanding and conservation



Participation and decision support



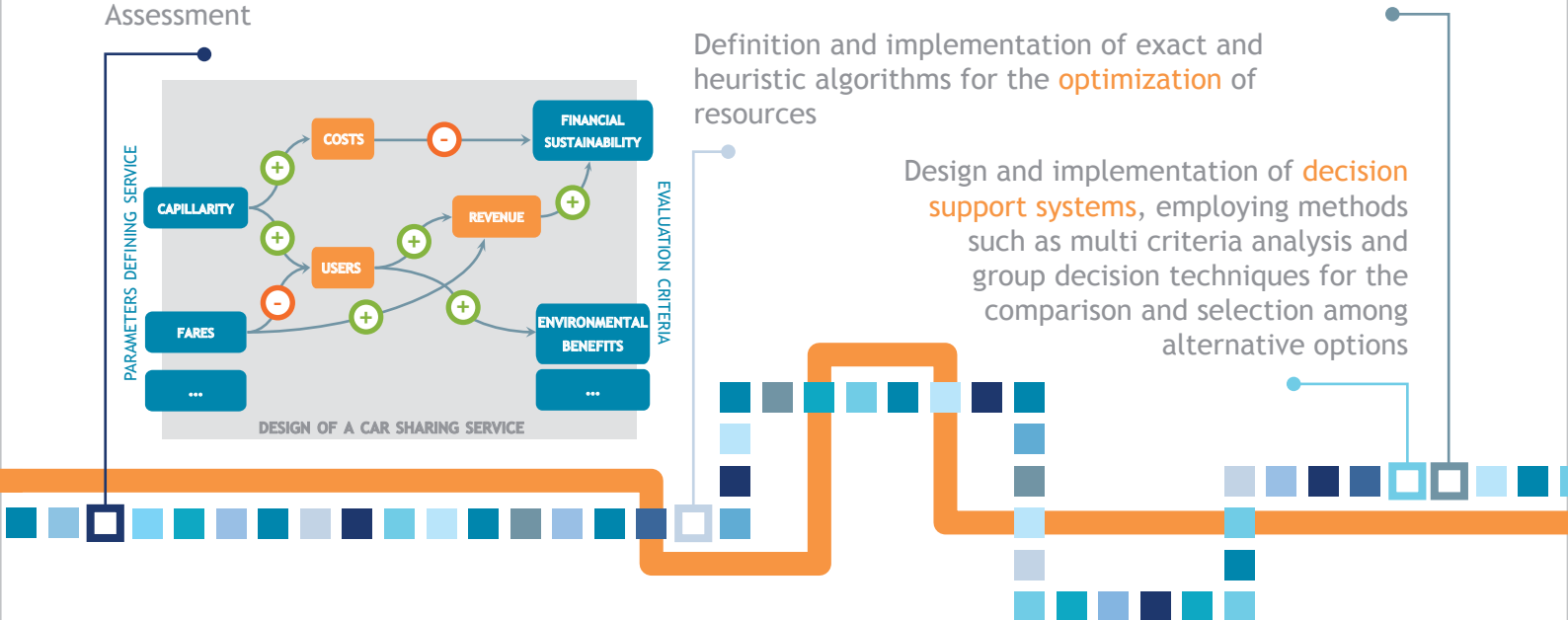
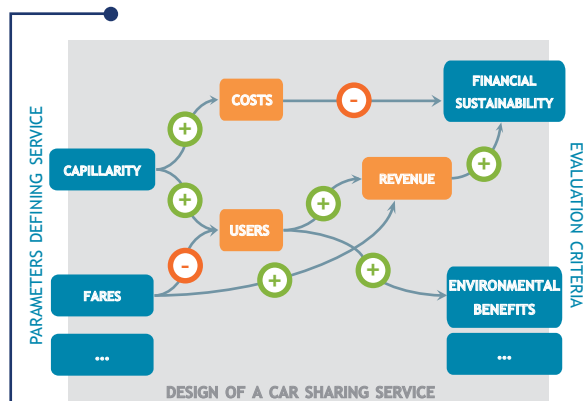
We promote transparent, inclusive and reproducible decision processes as a strategic condition for shared, adequate and sustainable choices, as well as a mean to manage conflict among stakeholders.

Planning and facilitation of **participatory processes** at different levels; management of the **consultation** phases in Strategic Environmental Assessment

Development of methods and tools for **active listening, facilitation, e-participation**, communication and information sharing

Definition and implementation of exact and heuristic algorithms for the **optimization** of resources

Design and implementation of **decision support systems**, employing methods such as multi criteria analysis and group decision techniques for the comparison and selection among alternative options





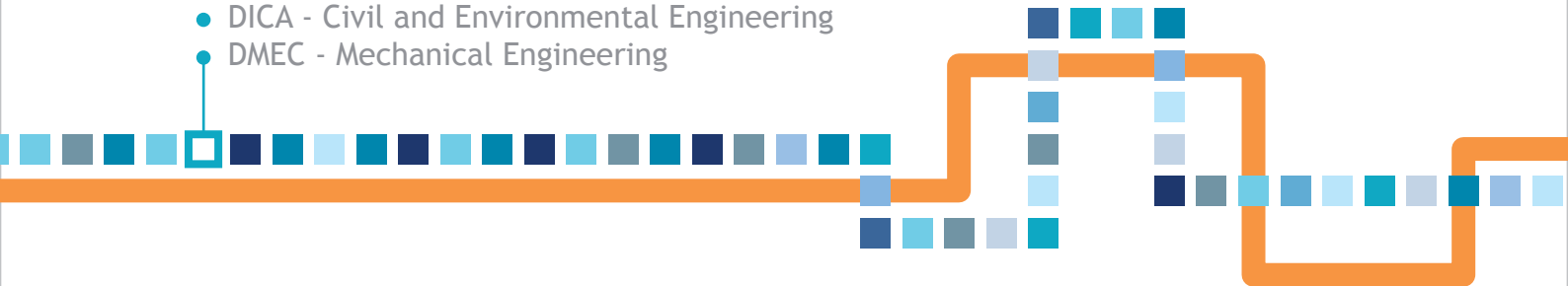
Organisation and partnerships

Our areas of expertise encompass engineering, environmental sciences, territorial and transport planning, conservation of cultural heritage and landscape, properly considering the socio-economical dimension. We widely use operational research tools and techniques of facilitation and participation.

A reliable partnership with some Departments of Politecnico di Milano enables us to promote **sectorial and territorial integration** in decision processes and to build up multidisciplinary solutions.

Partner Departments

- DASTU - Architecture and Urban Studies
- DEIB - Electronics, Information and Bio-Engineering
- DENG - Energy
- DESIGN
- DICA - Civil and Environmental Engineering
- DMEC - Mechanical Engineering



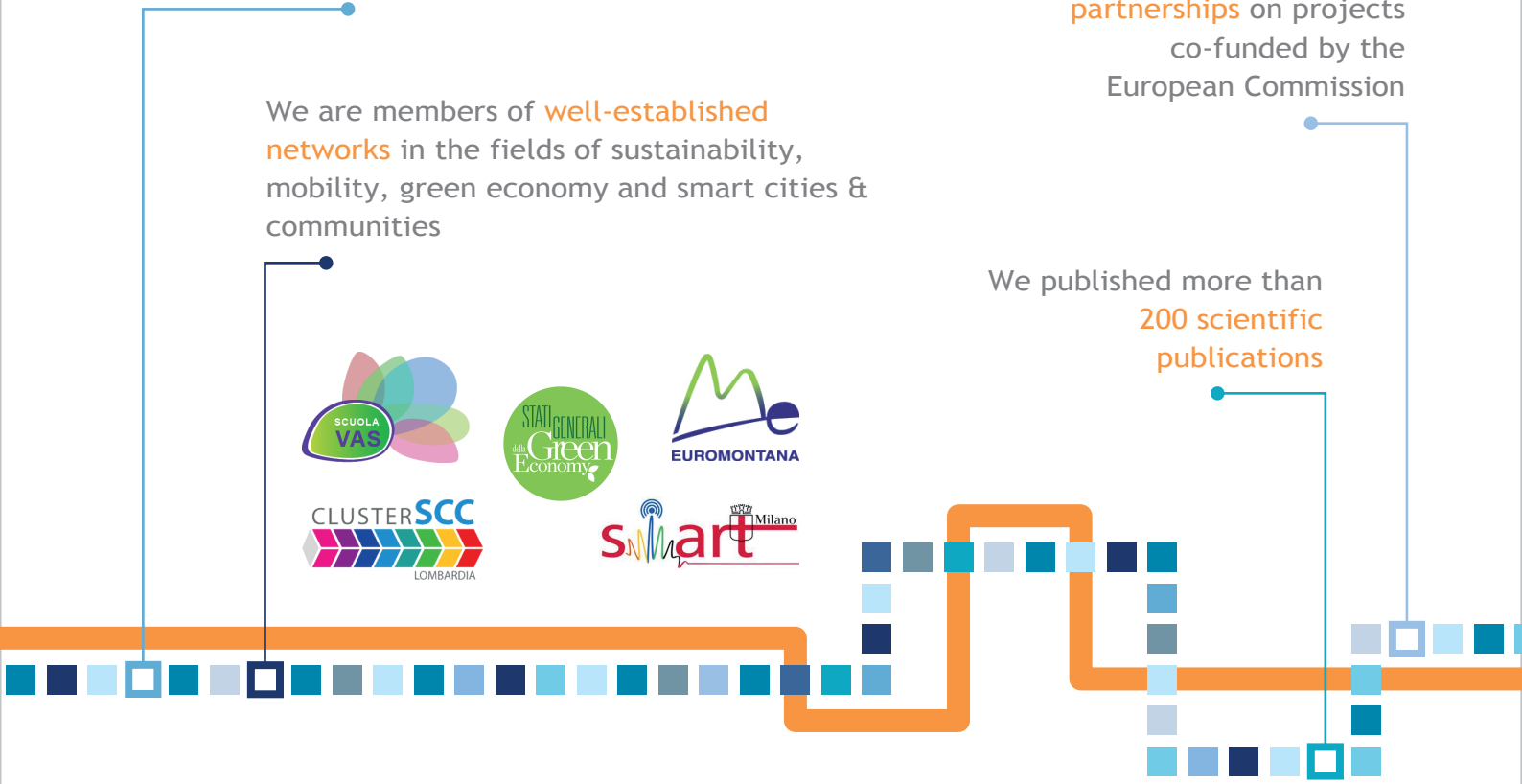
We collaborate with national, regional and local **public institutions**, with **universities and research centres**, as well as with **private companies**

We are members of **well-established networks** in the fields of sustainability, mobility, green economy and smart cities & communities



We consistently work in the context of **international partnerships** on projects co-funded by the European Commission

We published more than **200 scientific publications**



ALBERTO COLORNI
President

ELIOT LANIADO
General Director

ELISA AMODEO

FEDERICO LIA

SILVIA ARCARI

ALESSANDRO LUÈ

GABRIELLA ATZENI

SIMONA MURATORI

CHIARA BRESCIANI

ROBERTO NOCERINO

ALESSANDRA CAPIELLO

VALERIO PARUSCIO

DIEGO CICCARELLI

SILVIA PEZZOLI

ELENA CONTE

CARLOTTA SIGISMONDI

MARA COSSU

FERDINANDO STANTA

GIULIANA GEMINI

LUCA TOMASINI

ELENA GIROLA

SILVIA VAGHI

FEDERICA LAMBERTI

ENRICA ZUCCA

GIANLUCA LENTINI

Contacts

Via G. Colombo 40, 20133 Milano - IT

Tel: +39 02 23992900

Fax: +39 02 23992911

poliedra@poliedra.polimi.it

www.poliedra.polimi.it